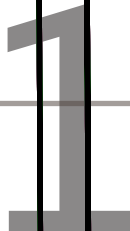


TEST SQUARE

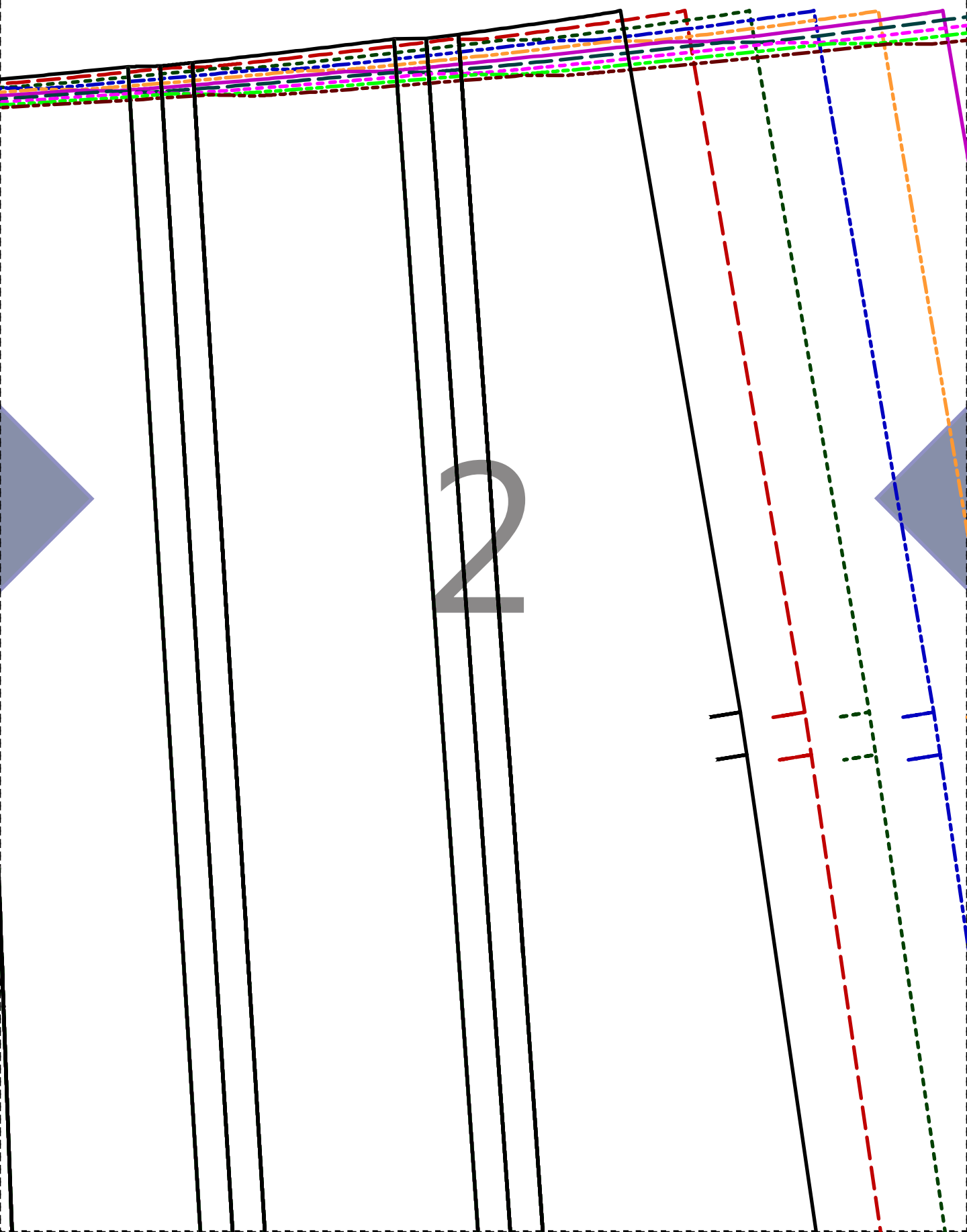
4" x 4"

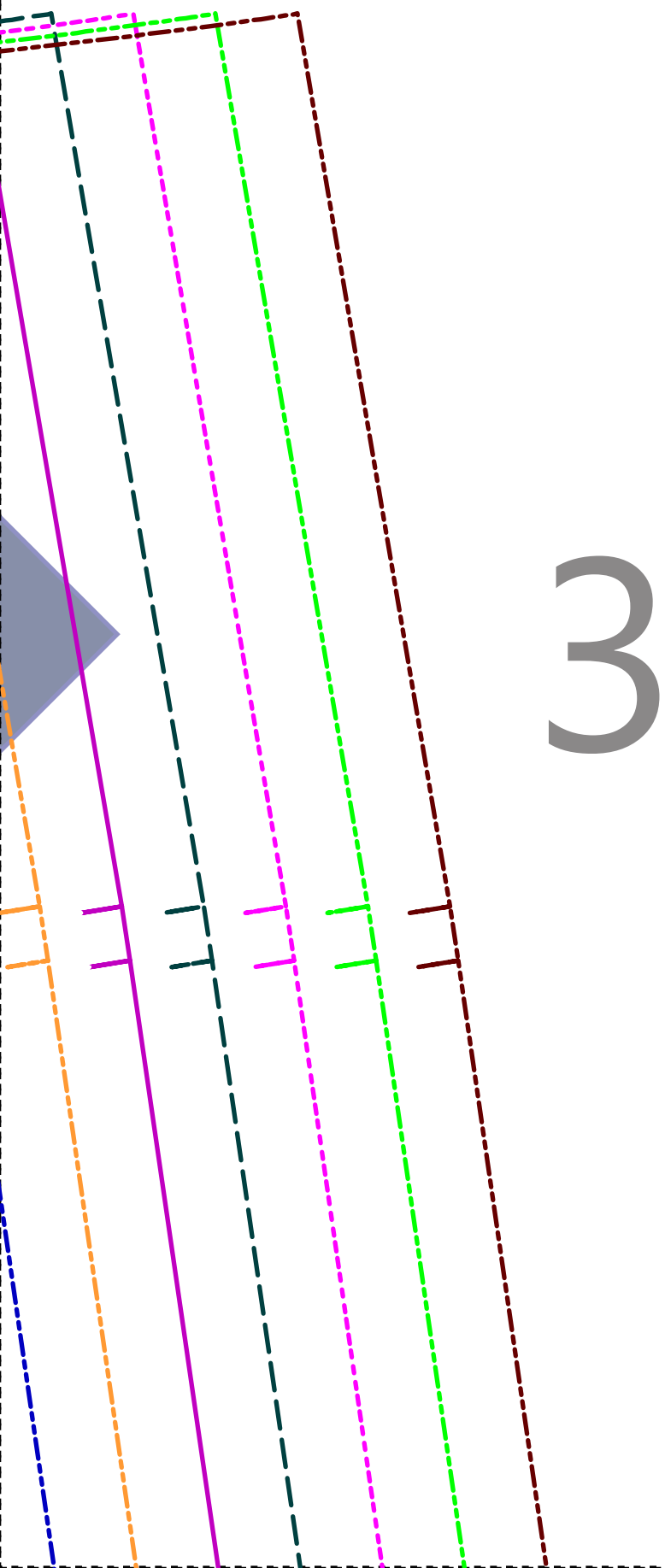
10.1 x 10.1



PLEATED SKIRT
CENTER FRONT
CUT 1
ON FOLD

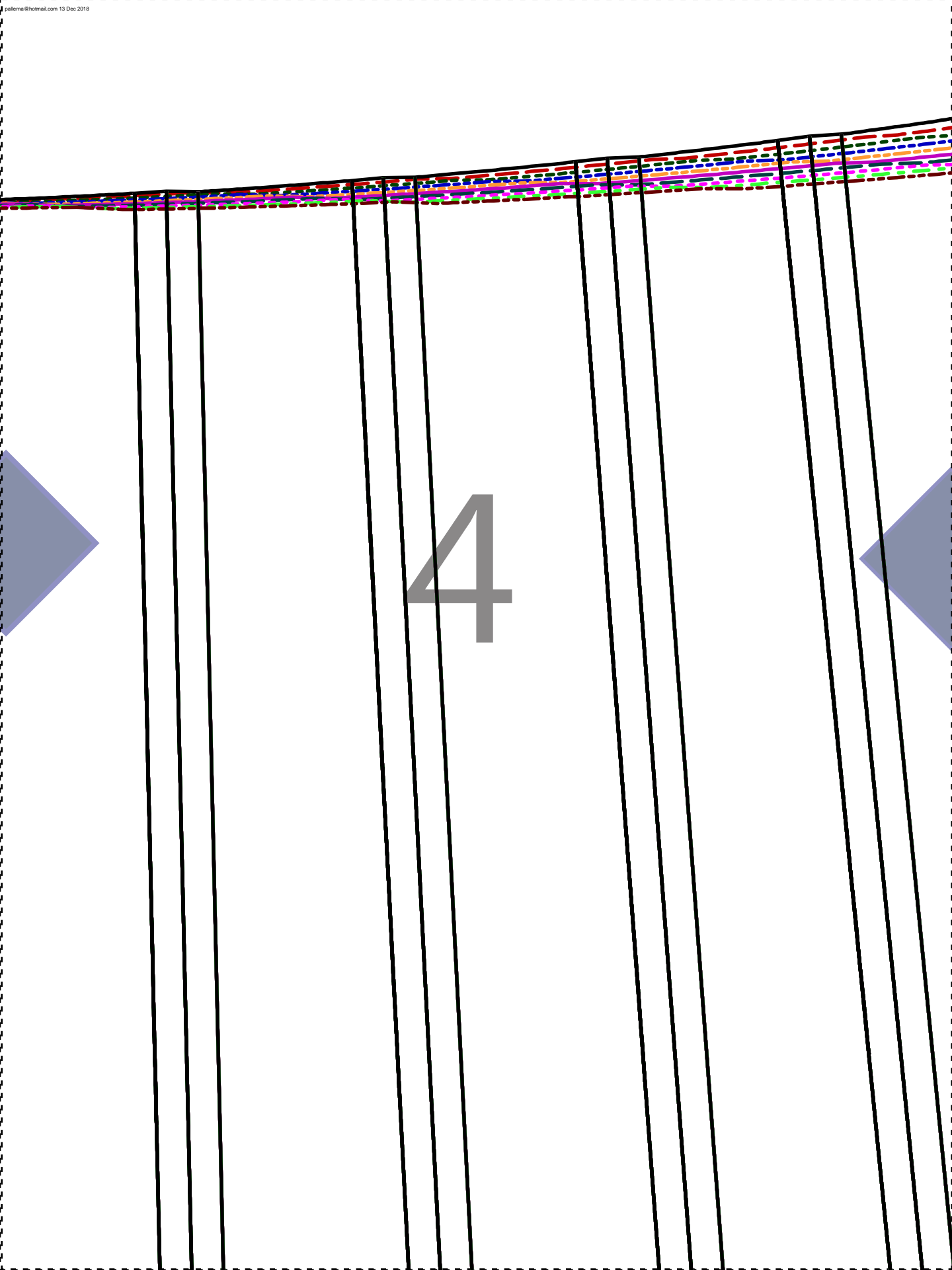




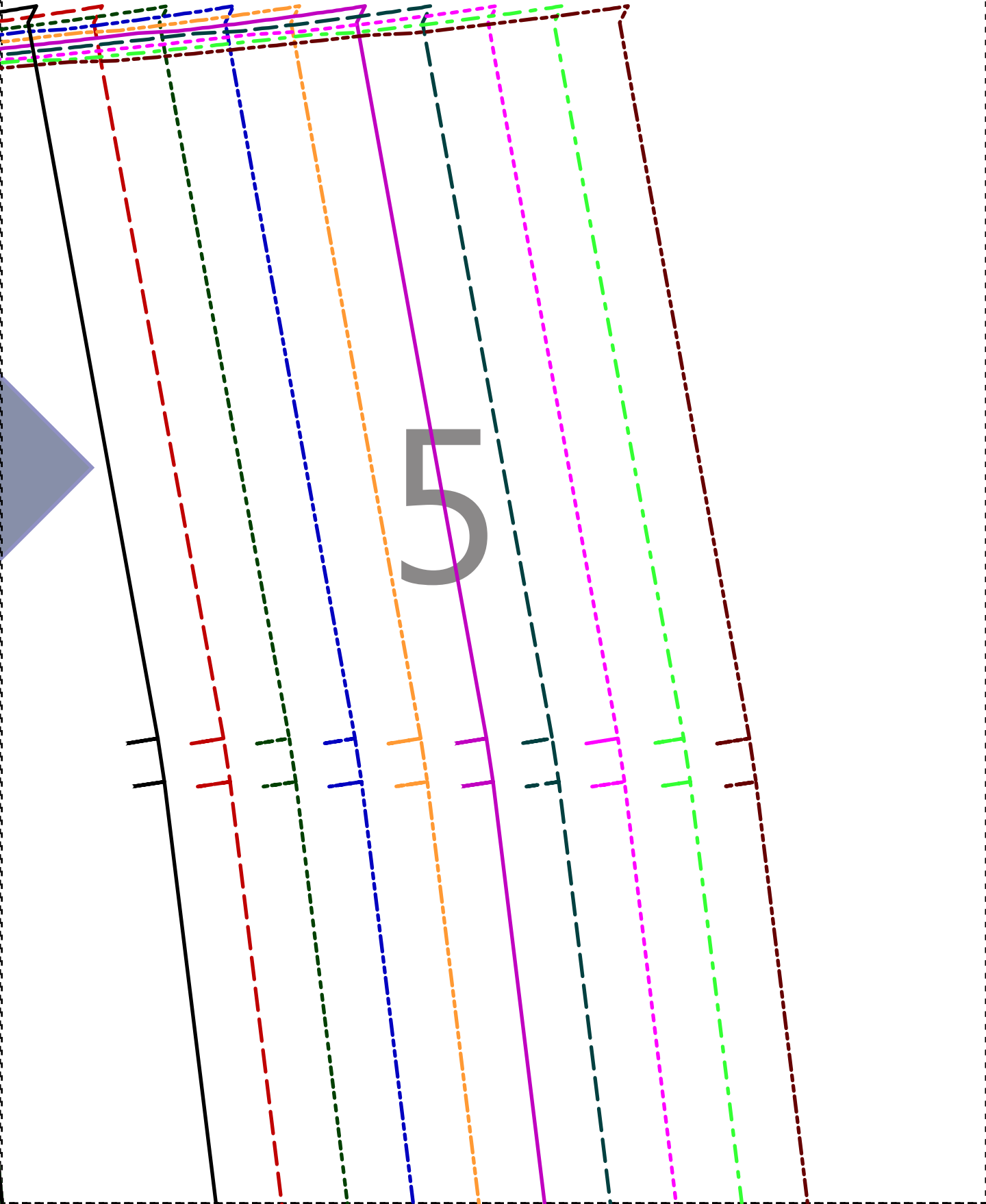


PLEATED SKIRT-
BACK SKIRT
CUT 1
ON FOLD



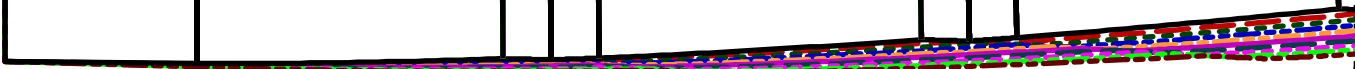
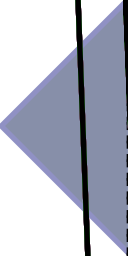


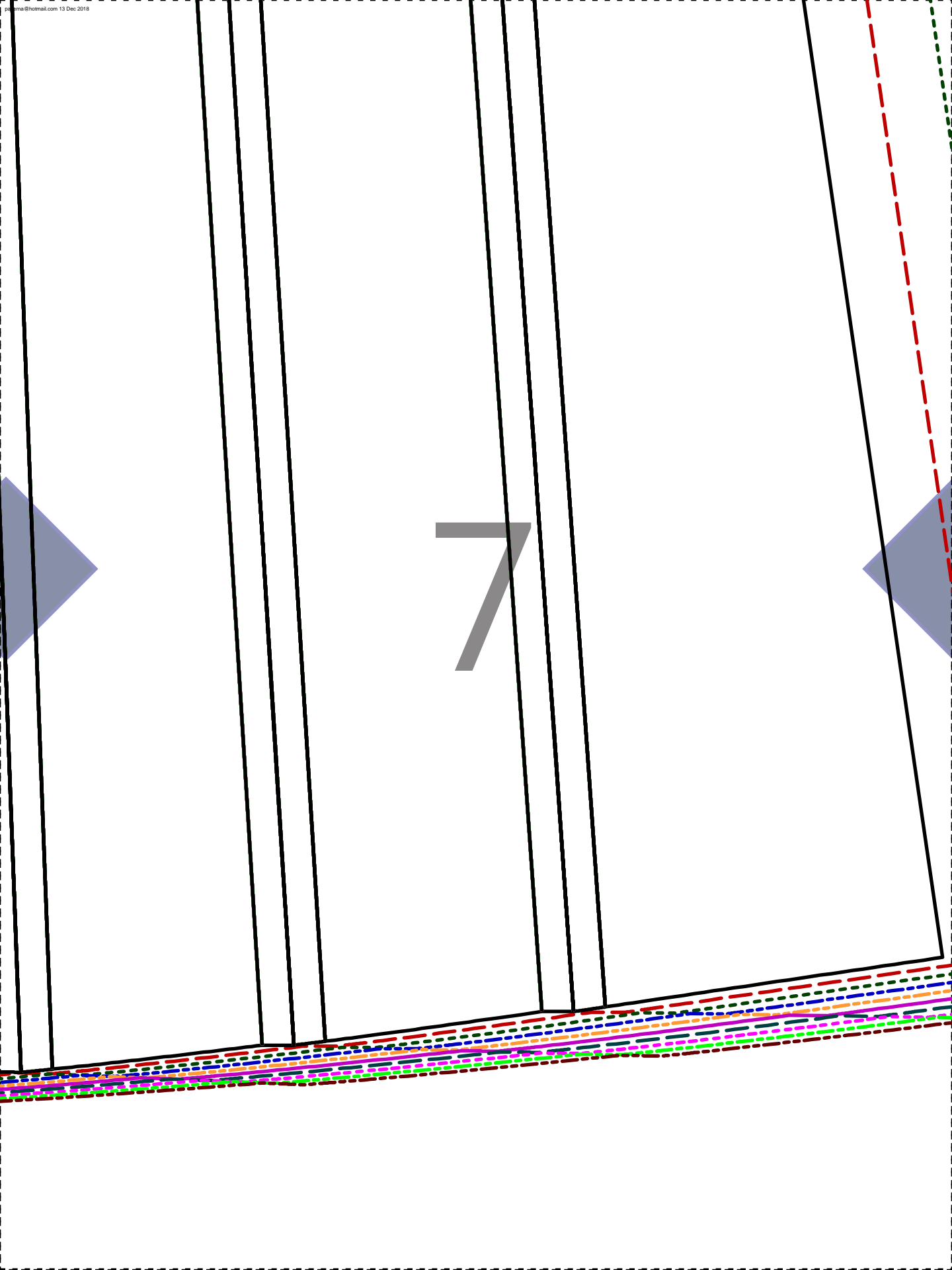
4

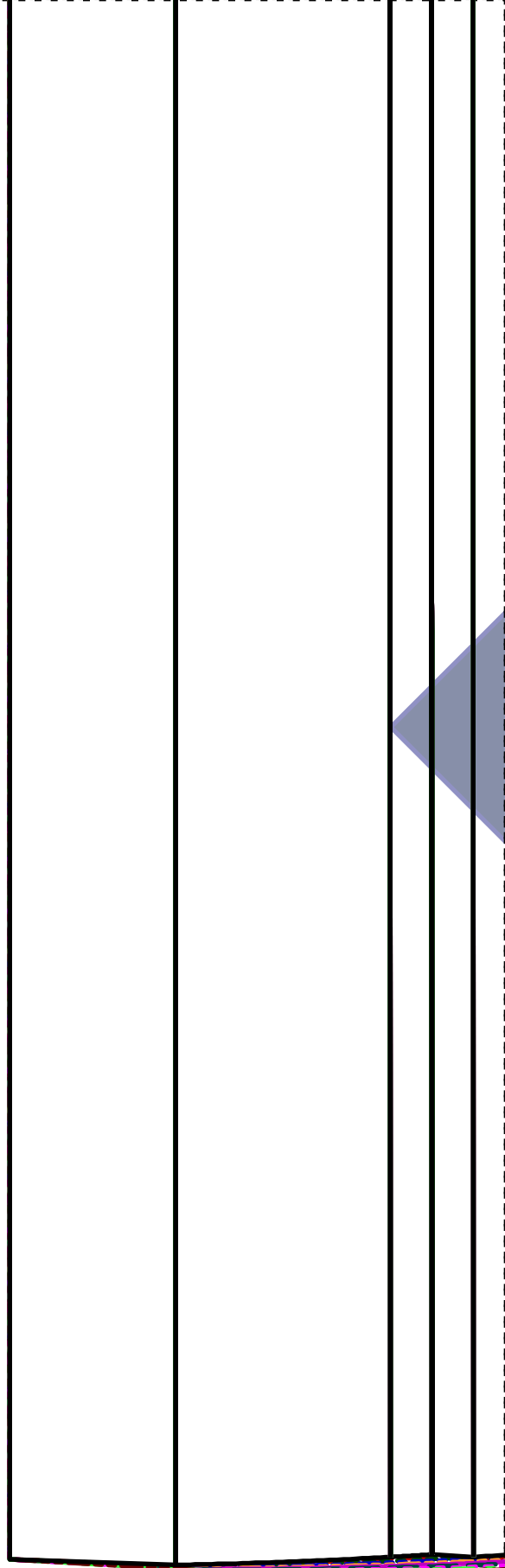
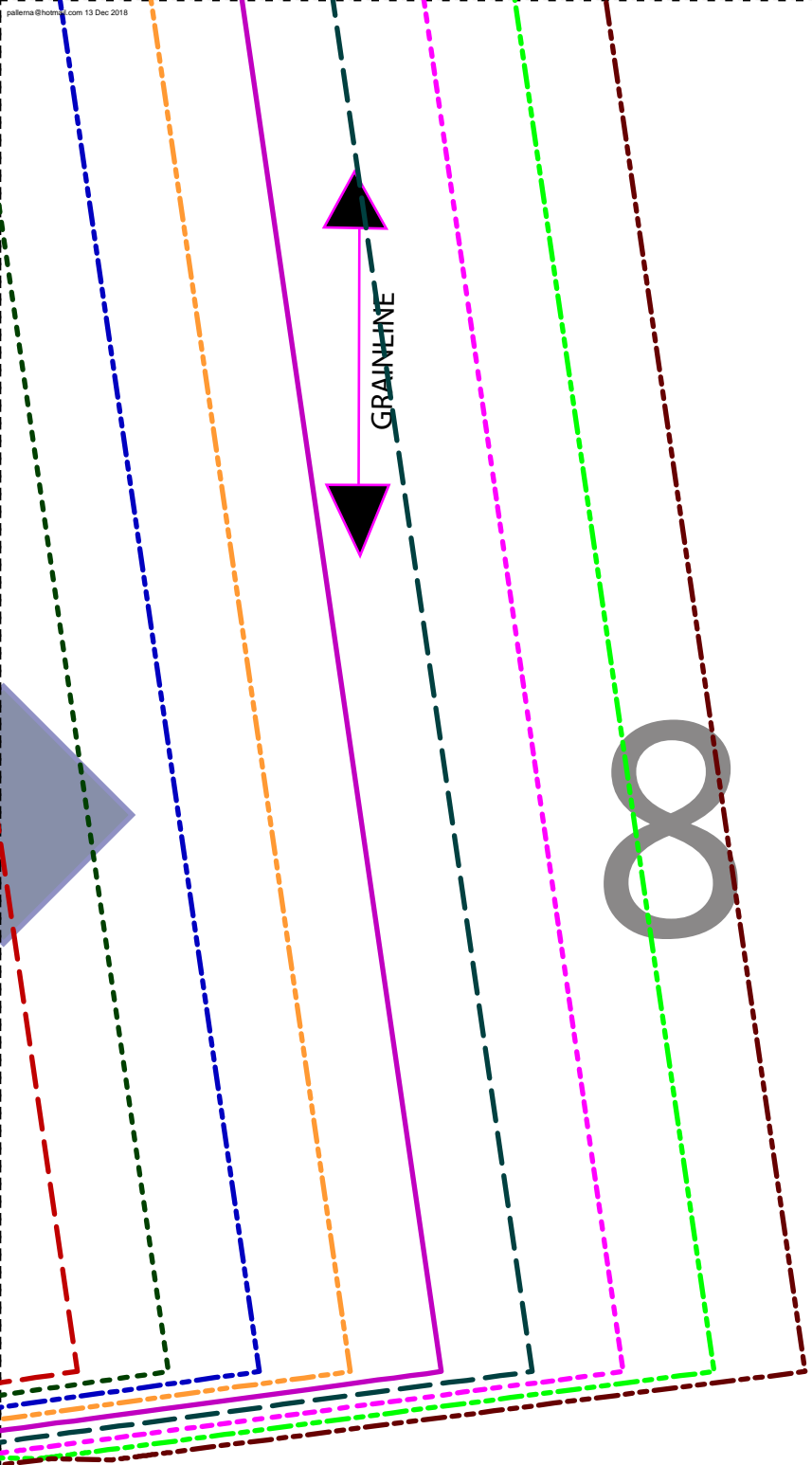


5

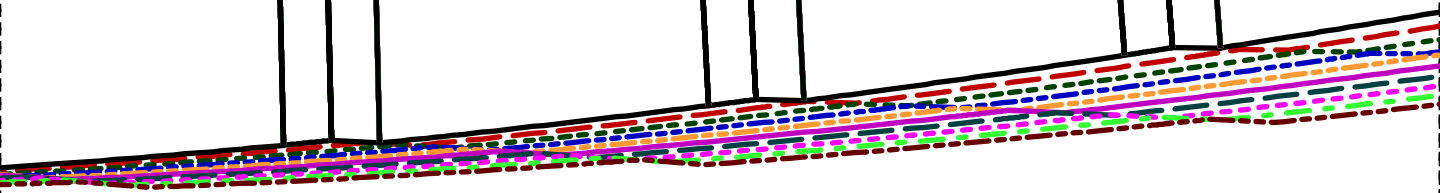
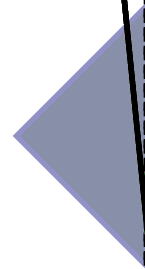
6

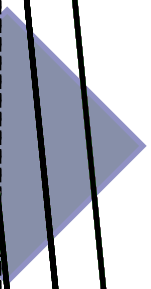






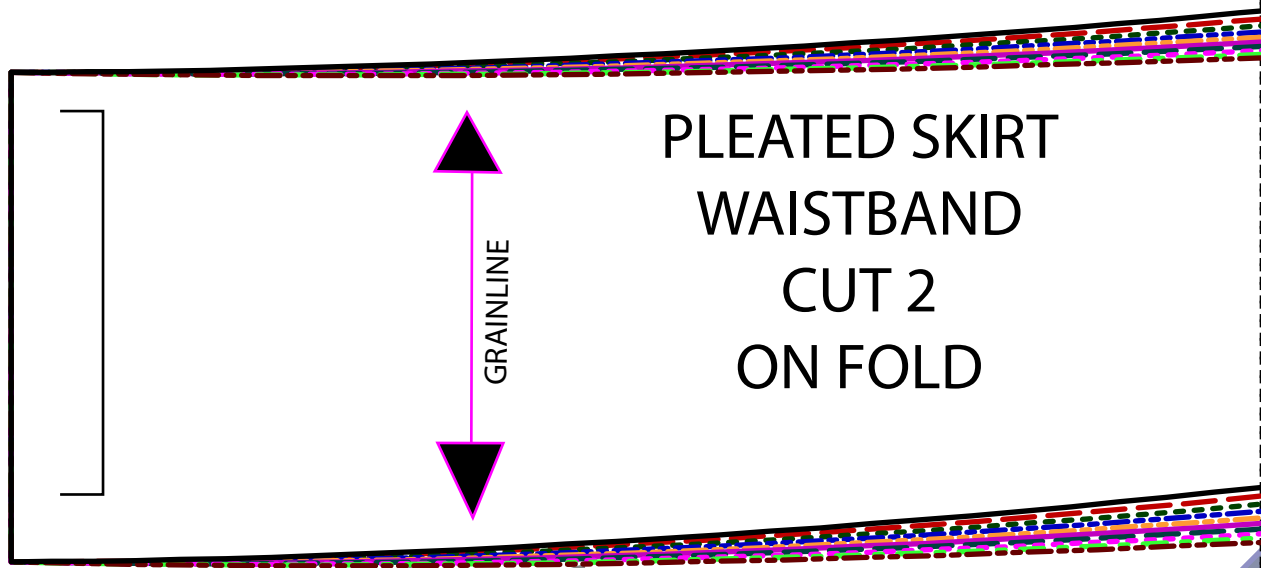
9





10

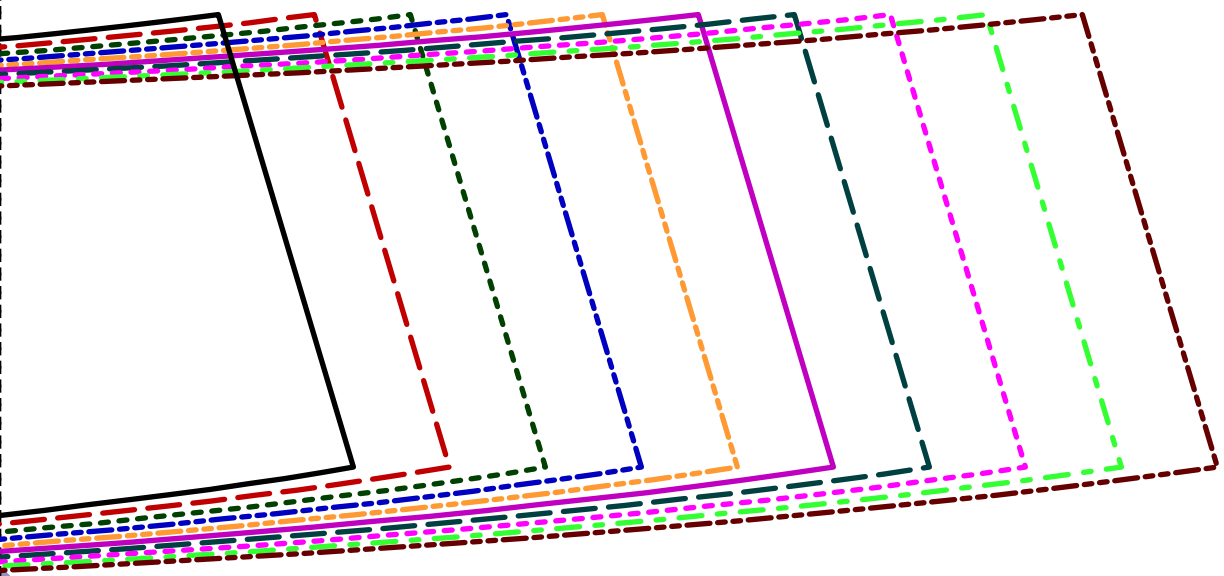
A large, tilted rectangular area containing multiple parallel lines for tracing. The lines are arranged in a sequence from left to right: a solid black line, a dashed red line, a dashed green line, a dashed blue line, a dashed orange line, a solid purple line, a dashed teal line, a dashed pink line, a dashed light green line, and a dashed brown line. The number '10' is centered within this area.



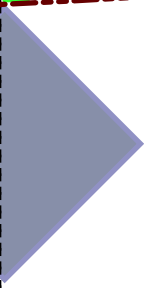
PLEATED SKIRT
WAISTBAND
CUT 2
ON FOLD

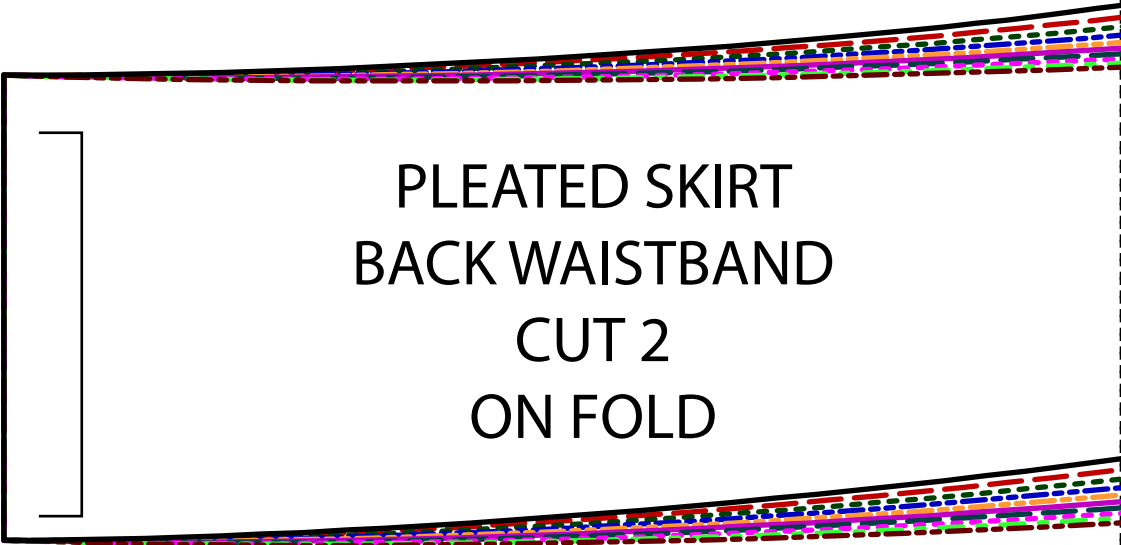
1 1





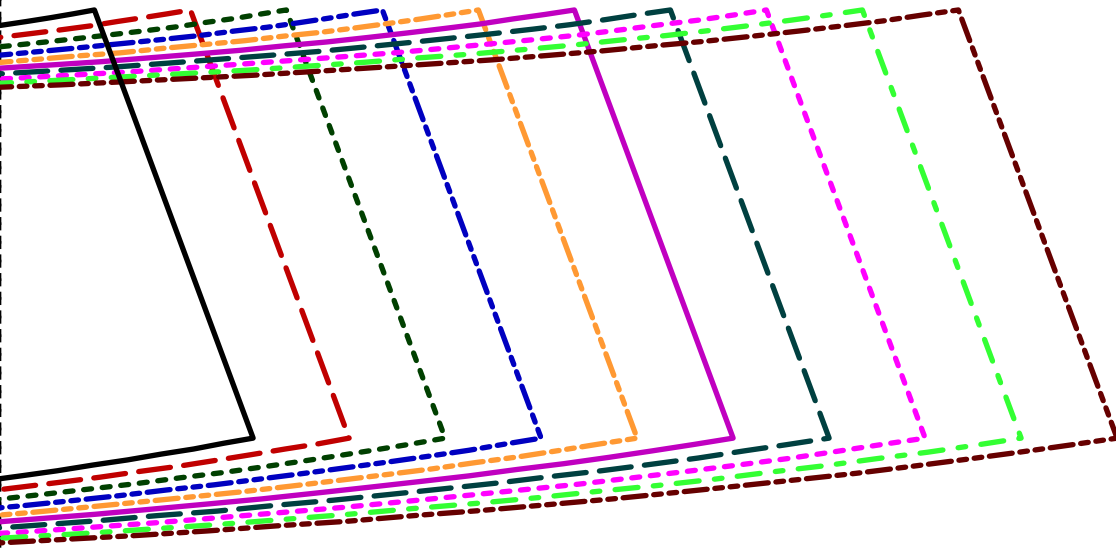
12





PLEATED SKIRT
BACK WAISTBAND
CUT 2
ON FOLD

13



14





15