



JEANNETTE DRESS

BY ON THE CUTTING FLOOR

Thanks for downloading the Jeannette Dress
for women.

This pattern belongs to On the Cutting Floor Designs
and it is for personal use only.

ON THE CUTTING FLOOR PATTERNS

Drafting Tutorial

Easy to Follow
Instructions

Professionally made
illustrations

PDF Sample Pattern for
sizes 4 to 22

ON THE CUTTING FLOOR
32495 McRae Avenue,
Mission, BC [Website](#)

[Facebook](#) [Twitter](#)
[Instagram](#)

INTRODUCTION:

Hi there!

I am Daniela, and I blog at On the Cutting Floor.

I am excited to share with you this drafting tutorial on How to Make Jeannete Dress.

If you have visited my blog before, you have noticed that I make free patterns. I love to create modern, feminine pieces that you can wear every day.

I have tried my best to size and grade the pieces from size 4 to 22.

However, the standard sizing of the clothing industry only benefits itself: the reality is that there is no standard bodies, so why would you use a standard pattern?

Most of them will NEED some adjustments. Sometimes some adjustments will take longer than learning how to draft your own pattern...

That is why I created this drafting tutorial.

This drafting tutorial includes:

- How to take your own measurements
- How to draft a raglan sleeve dress
- How to add the unique variations to create the flare raglan sleeve dress with the color block design □ A professionally illustrated sewing tutorial □ A Sample pattern from sizes 4 to 22!

“Your Closet, your fit”

I hope you like it.

Daniela

TABLE OF CONTENTS

1. THE PATTERN:

TECHNICAL DRAWING OF THE JEANNETTE DRESS PATTERN

2. MEASUREMENT CHART:

GET YOUR MEASUREMENTS READY

3. DRAFTING TUTORIAL:

LEARN HOW TO CREATE YOUR OWN, CUSTOMIZED DRESS PATTERN

4. PRITING INSTRUCTIONS

□ PRITING LAYOUT

5. SEWING TUTORIAL:

CREATE YOUR DRESS WITH THIS EASY, STEP BY STEP TUTORIAL

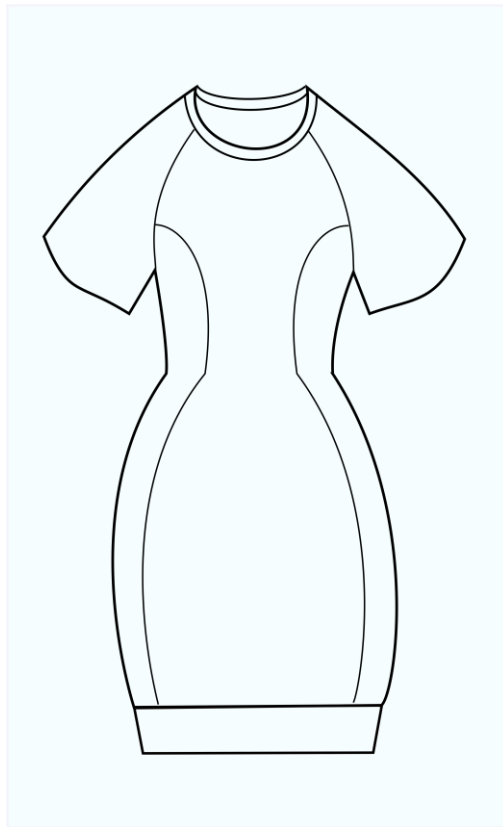
○ MATERIALS

○ FABRIC PLACEMENT AND YARDAGE CALCULATION

○ SIZES AND COLOR CODED INFORMATION ○

STEP-BY-STEP ILLUSTRATED TUTORIAL

THE PATTERN



JEANNETTE DRESS

RECOMMENDED MATERIAL:

MEDIUM JERSEY KNIT

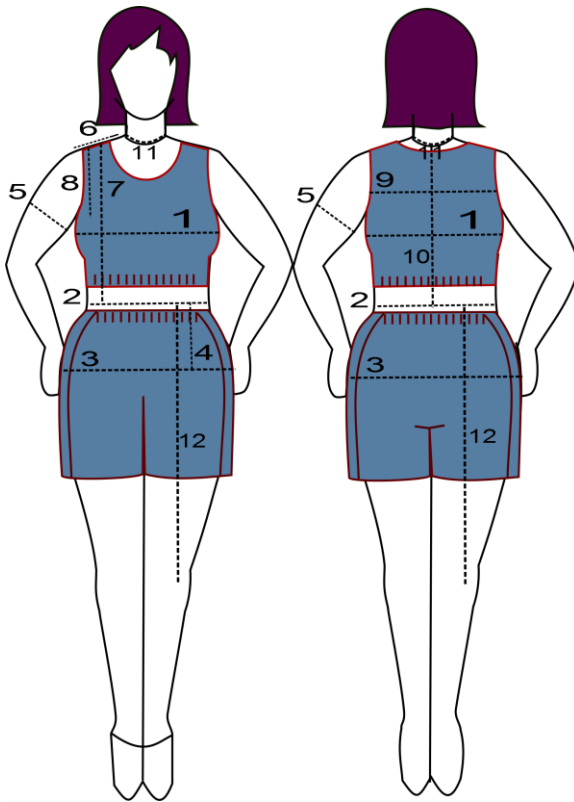
IT FEATURES A

- FITTED JERSEY DRESS
- ROUNDED NECKLINE
- PRINCESS SEAMS

□ FLARED RAGLAN SLEEVES

MEASUREMENT CHART

TAKING YOUR OWN MEASUREMENTS

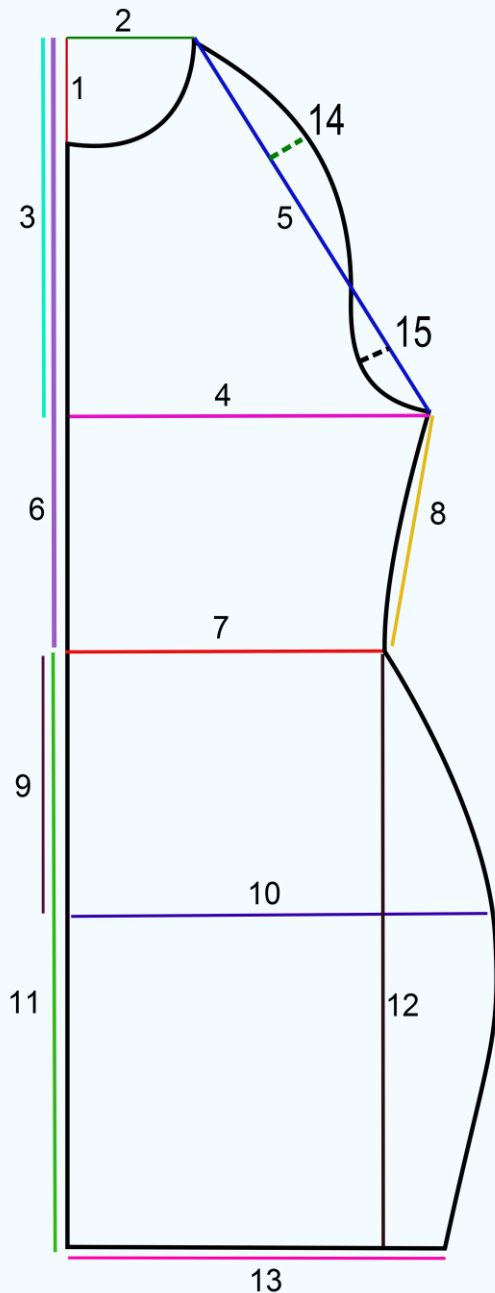


1. Bust
2. Waist
3. Hips
4. Waist to Hips
5. Upper Arm
6. Shoulder Width
7. Shoulder to waist
8. Armscye Depth
9. Back Width
10. Neck to Waist
11. Neck
12. Waist to knee

DRAFTING TUTORIAL

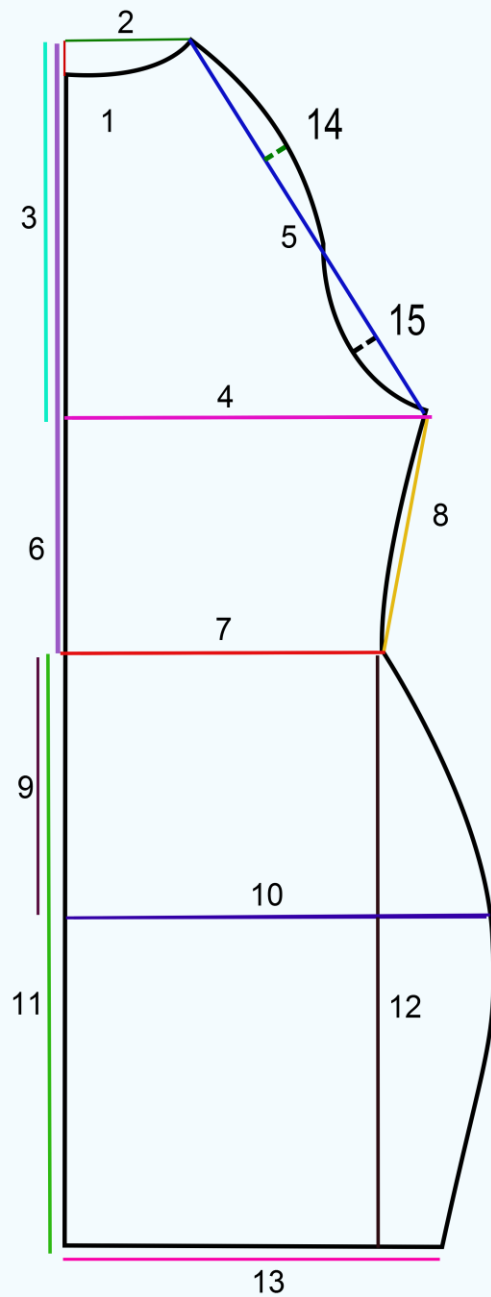
PLEASE NOTICE THAT 3/8 INCH SEAM
ALLOWANCE HAS BEEN INCLUDED IN THE TUTORIAL

FRONT BODICE



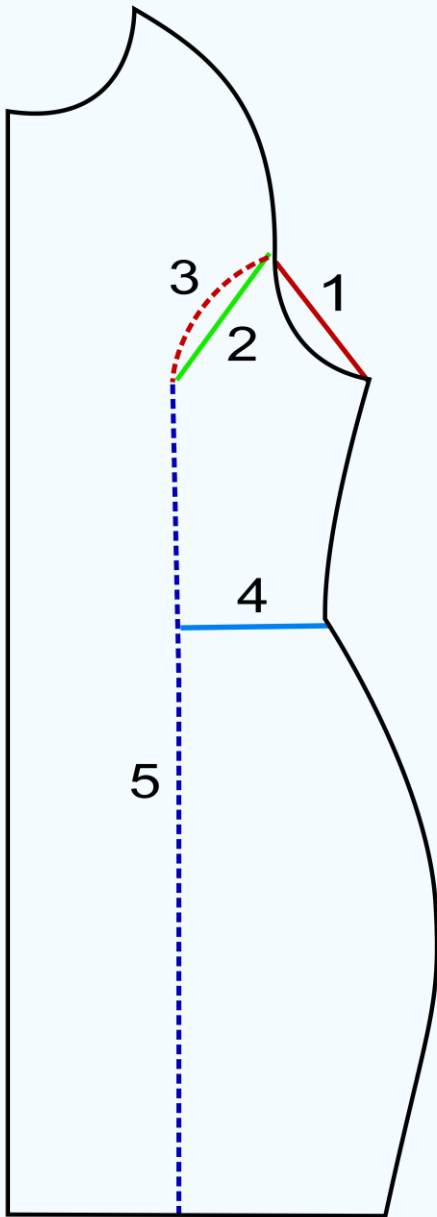
1. ONE FIFTH NECK MEASUREMENT
 2. One fifth neck measurement
 3. Armscye depth measurement plus 1 inch
 4. $\frac{1}{4}$ bust measurement plus $\frac{1}{2}$ inch
 5. Join neckline area (number 2) with bust measurement (number 4)
 6. Neck to waist measurement
 7. $\frac{1}{4}$ waist measurement plus $\frac{1}{2}$ inch
 8. Square up to number 4
 9. Waist to hip
 10. $\frac{1}{4}$ hips measurement plus $\frac{1}{2}$ inch
 11. Waist to knee length
 12. Waist to knee length (by using measurement number 10 curve the final line to make the waist to knee outer line)
 13. $\frac{1}{4}$ waistline plus 3 inches
- Divide the armhole line into three equal parts.
14. Take 2 thirds of the top area and curve out the line by 1 inch (where the green dotted line is marked)
 15. Take the one third bottom part and curve in by 1 inch (where the black dotted line is marked)

BACK BODICE



1. 1/5 inch
 2. One fifth measurement
 3. Armscye measurement plus 1 inch
 4. ¼ bust measurement plus ½ inch
 5. Join neckline area (number 2) with bust measurement (number 4)
 6. Neck to waist measurement
 7. ¼ waist measurement plus ½ inch
 8. Square up to number 4
 9. Waist to hip
 10. ¼ hips measurement plus ½ inch
 11. Waist to knee length
 12. Waist to knee length (by using measurement number 10 curve the final line to make the waist to knee outer line)
 13. ¼ waistline plus 3 inches
- Divide the armhole line into two equal parts.
14. Take the first half and curve out the line by ½ inch (where the green dotted line is marked)
 15. Take the bottom part and curve in by ½ inch (where the black dotted line is marked)

MAKING THE SIDE SEAM PANEL



1. Measure 1/3 of the armhole bottom area
2. Make a line from the side to the bust point
3. Curve the line out by ½ inch
4. Measure from number 1
5. Make a straight line from the bottom of number 3 to the hemline of the dress.

Cut and add ¼ inch seam allowance to the pieces.

Repeat the same process with the back bodice piece.

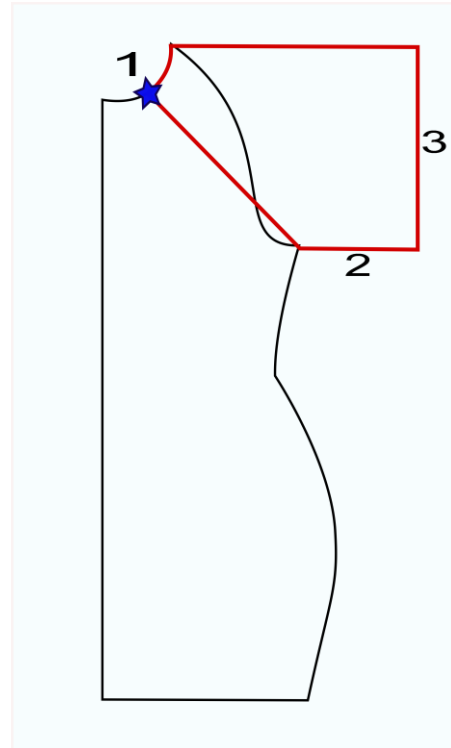
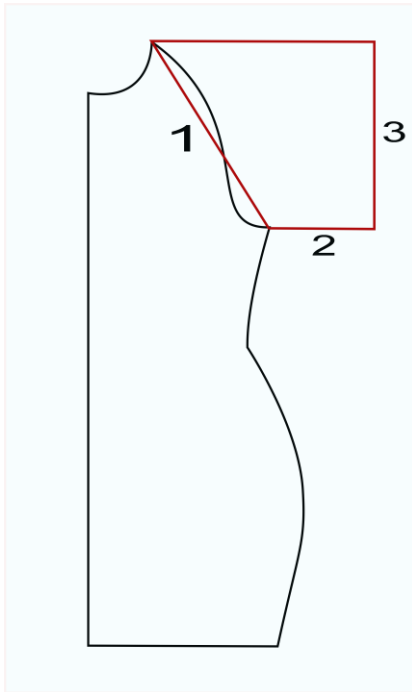
MAKING THE BASIC RAGLAN SLEEVES

To make the raglan sleeve, you will create an imaginary kimono sleeve to the dress: 1.

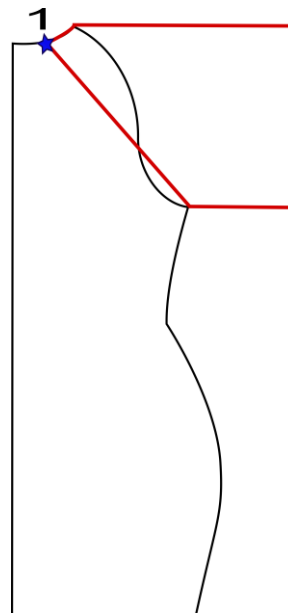
from the neckline to the armhole

2. Desired length of the sleeve (mine in the pictures are 6 inches (15 centimeters) long.

3. Square up to the neckline area

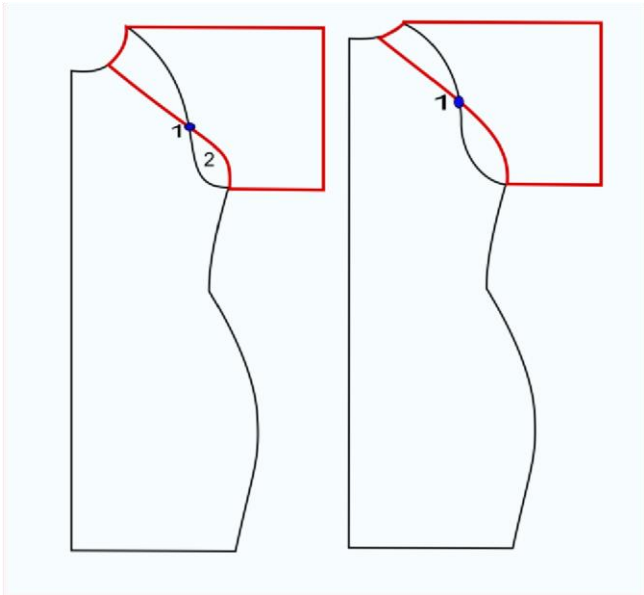


Repeat this process with the back bodice.



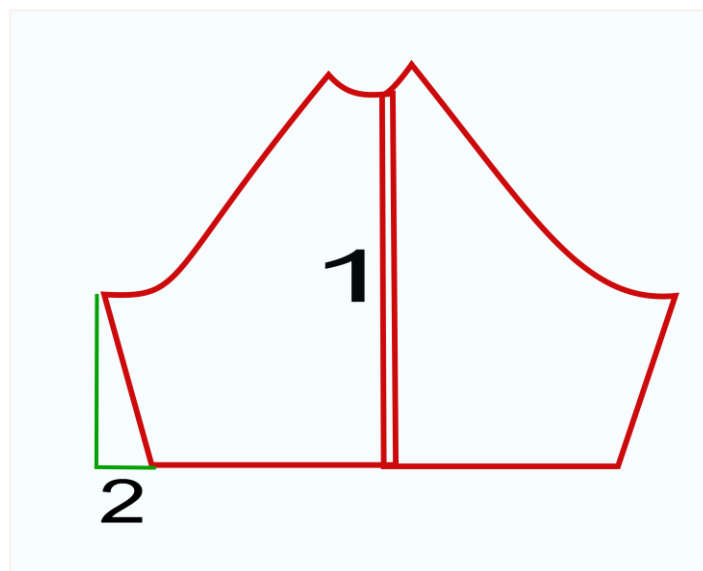
1. Move the line to the middle of the neckline.

1. MARK ONE THIRD OF THE ARMHOLE SLEEVE FOR
THE FRONT BODICE
AND HALF OF THE ARMHOLE FOR THE BACK BODICE Curve
the line in to make a mirrored line of the bodice armhole line.



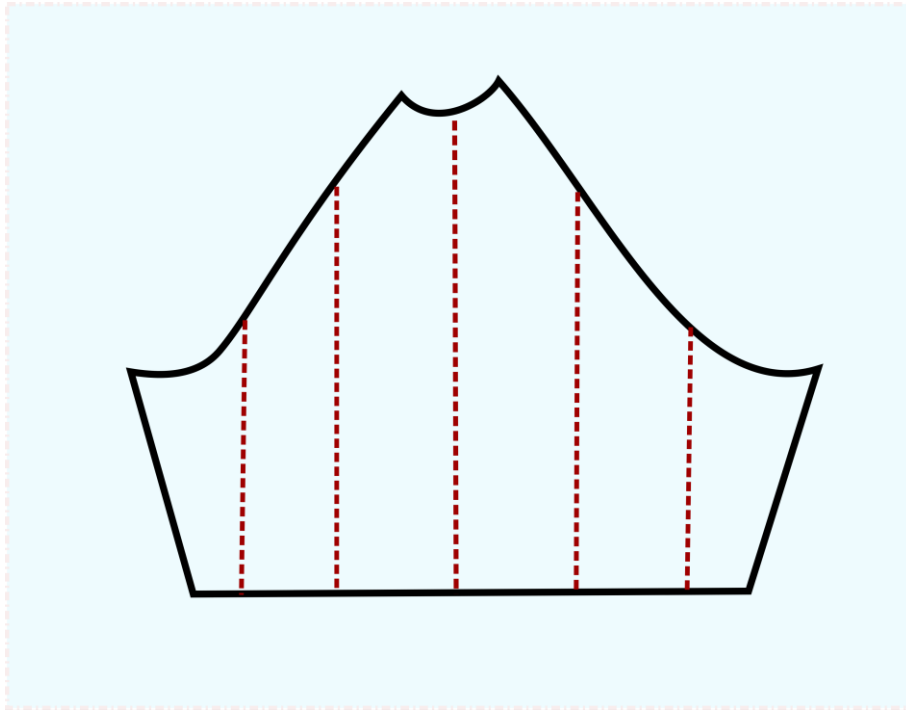
Take both pieces and put them together, as showed below:

1. Overlap the sleeve pieces by $\frac{1}{2}$ inch.
2. Take 2 inches in the sleeve.

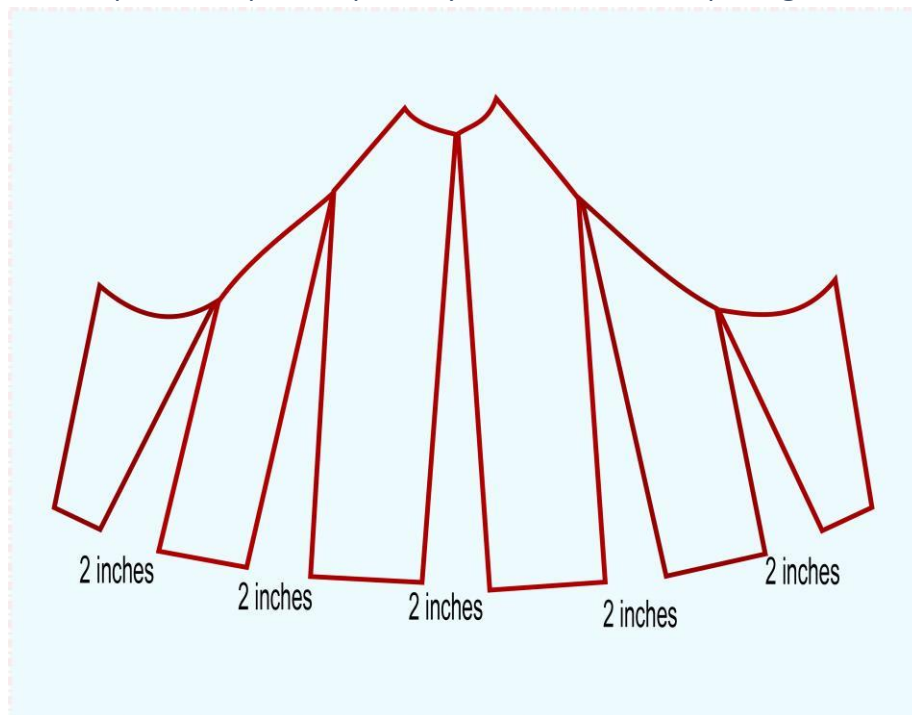


MAKING THE FLARED RAGLAN SLEEVES

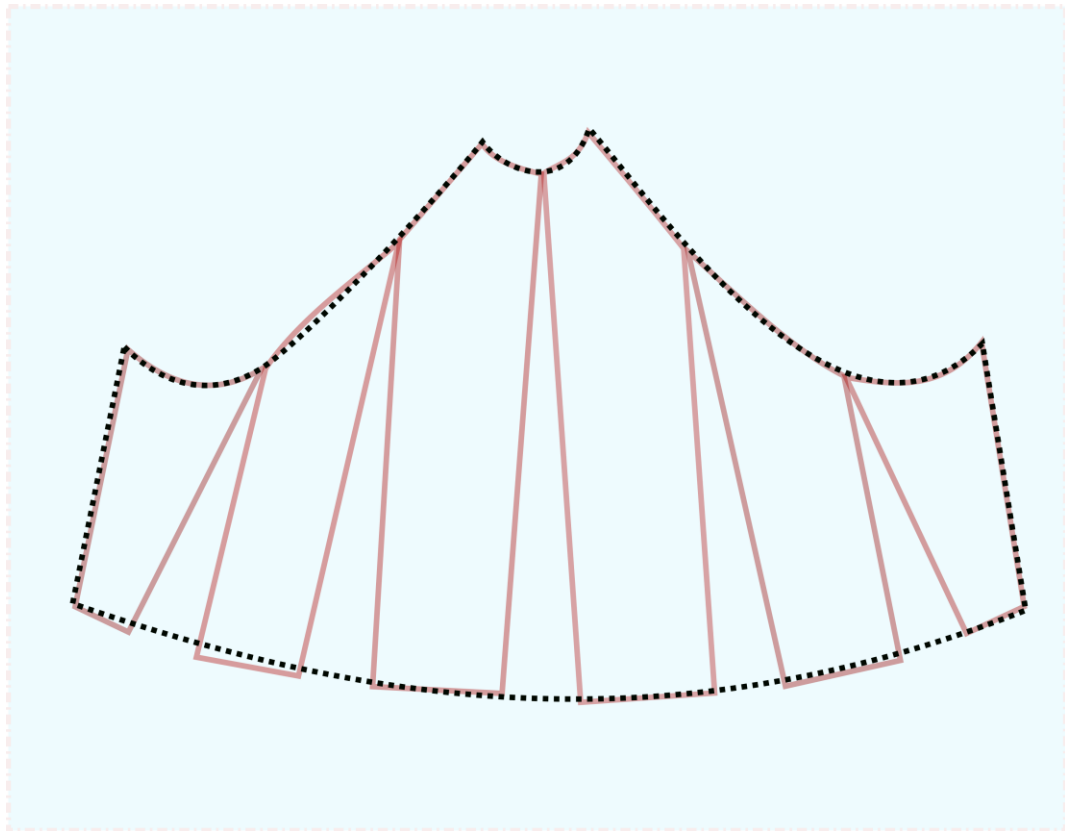
1. Make 5 parallel lines on the sleeve: One in the middle, and two more on each side.



2. Cut on the dotted lines and spread the pattern piece by 2 inches on each opening



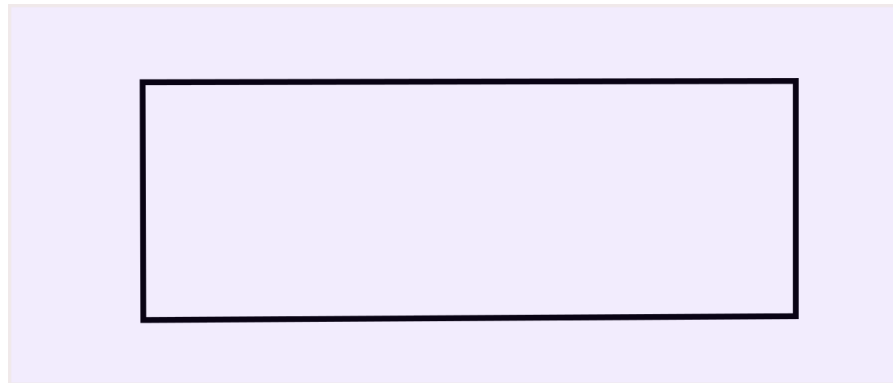
3. Re-draft the pattern and adjust the armhole areas and bottom to have smooth curves



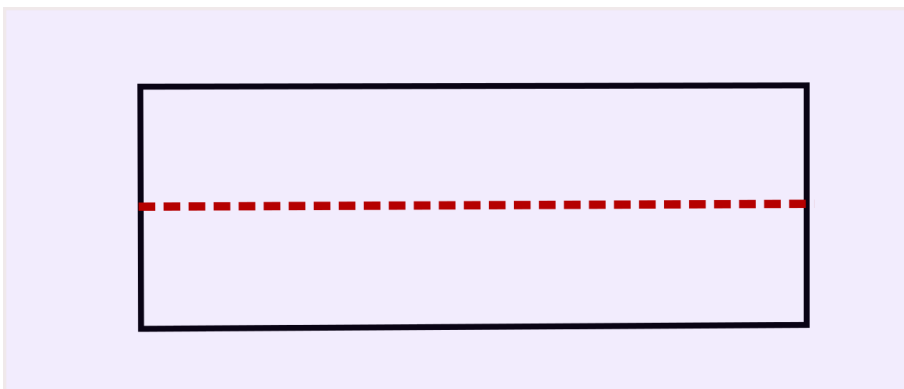
HEMLINE BAND

1. $\frac{1}{2}$ hemline measurement from the original bodice created

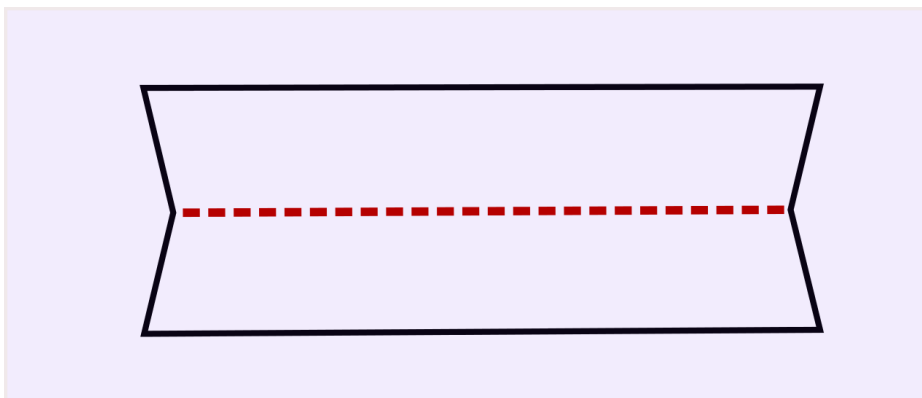
x 6" long



2. Divide the length into two equal parts

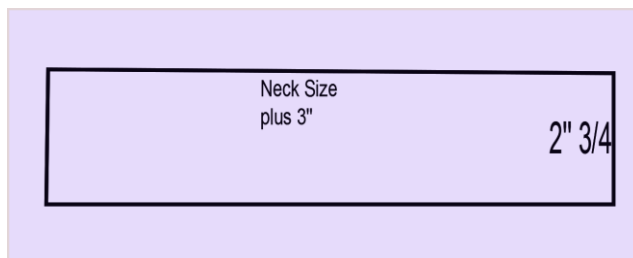


3. Reduce the lines by ½ inch



NECKLINE BAND:

Neck size + 3 inches X 2 ¾

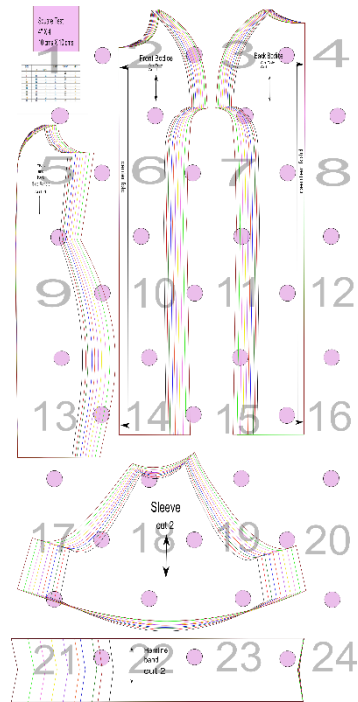


PRINTING INSTRUCTIONS

This printable PDF pattern is assembled BY OVERLAPPING THE PAGES 1/2 centimeter.

That will make it easier to assemble and avoid further fitting issues. The pattern comes in letter size paper. To print this pattern, go the PDF document. Select FILE — PRINT. This pattern comes in A4 and Letter Size Version

This will be the layout of your pattern:



It will print 24 pages. Wait until all the pages are printed before taking them from the printer; it will make it easier to assemble. When finish printing, place the pages as the layout below. Then use tape to put them together. Now cut the pieces

Sometimes, there are problems with the printing process and the patterns come in the wrong size (a little bit smaller).To avoid this, check the 1 inch square located in the first page of the printed document.

It will help you to see if the patterns are the correct size.

SEWING TUTORIAL

MATERIALS

1. 2 ¼ YARDS OF JERSEY KNIT FABRIC.
2. COORDINATING COTTON THREAD
3. SCISSORS
4. MARKER

SIZES FOR SAMPLE PATTERNS

SIZE			BUST	WAIST	HIPS
US	UK	EUROPE			
4	8	34	31	25	35
6	10	36	33	26	36
8	12	38	34	27	38
10	14	40	36	29	40
12	16	42	37	30	42
14	18	44	39	32	44
16	20	46	41	33	46

18	22	48	43	35	48
20	24	50	45	38	50
22	26	52	48	40	52

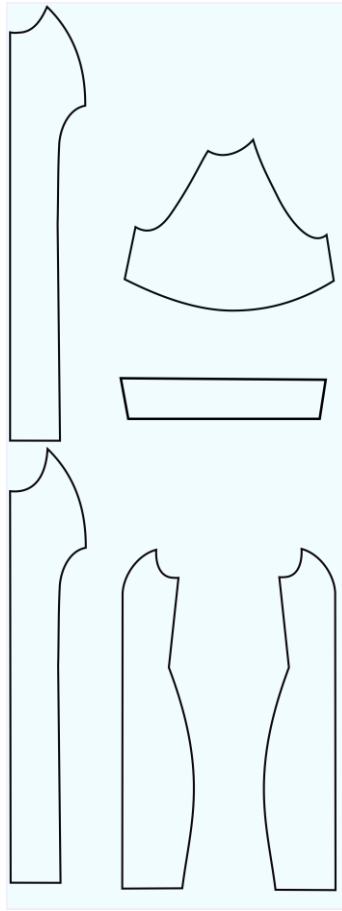
COLOR CODED PATTERNS:

Size	Color	14	PURPLE
4	black		
		16	YELLOW
6	Red		
		18	PINK
8	GREEN		
		20	LIGHT GREEN
10	BLUE		
		22	BROWN
12	ORANGE		

PATTERN PLACEMENT

YARDAGE CALCULATION FOR 1 COLOR DRESS:

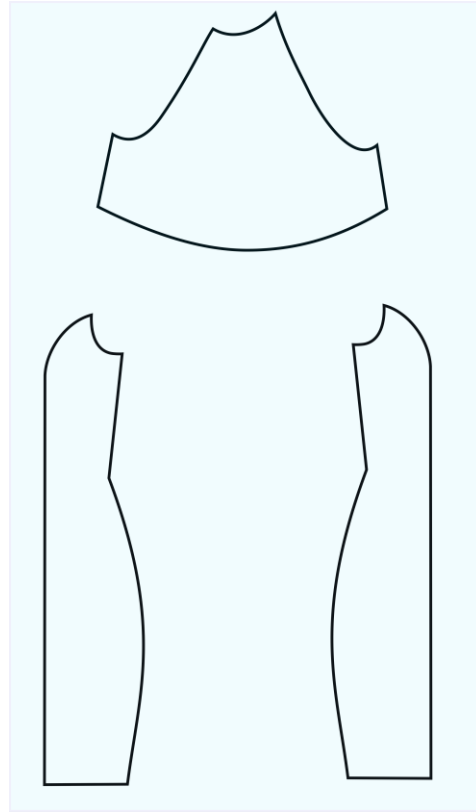
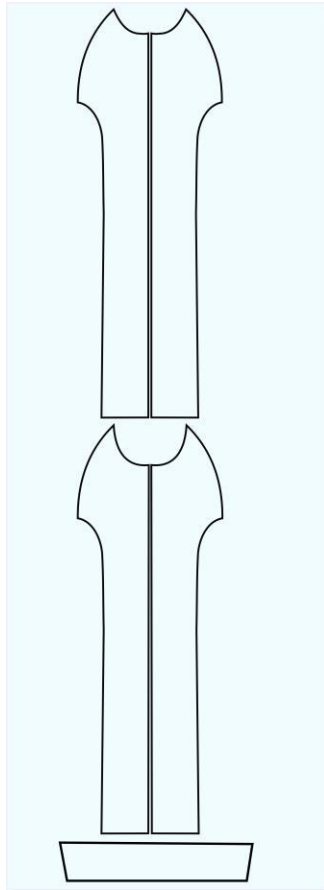
2 ¼ YARDS (2 METRES) OF JERSEY KNIT FABRIC



YARDAGE CALCULATION FOR COLOR BLOCK DRESS

MAIN FABRIC: 2 ¼ YARDS (2 METRES)

SIDES AND SLEEVES: 1 ½ YARDS (1.2 METRES)

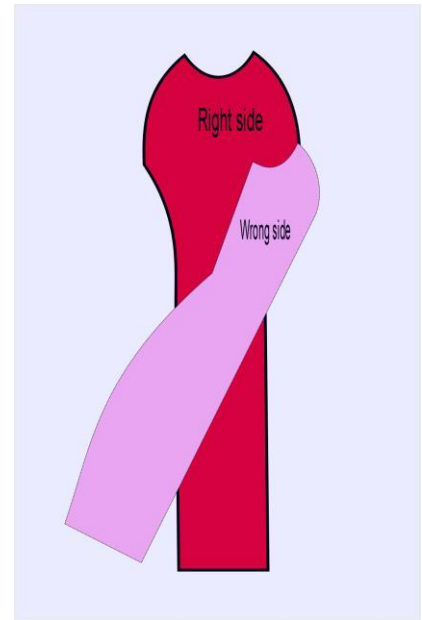
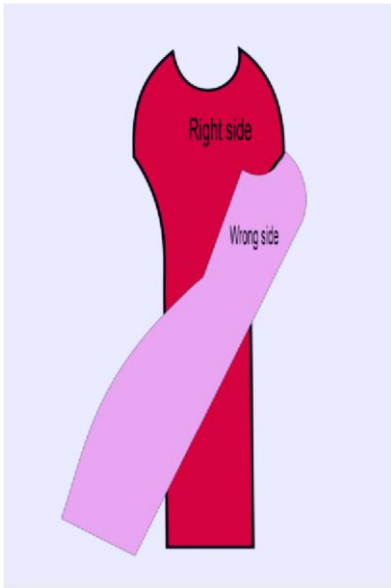


Sewing Tutorial

Please notice that 3/8 inch seam allowance has been included in the patterns

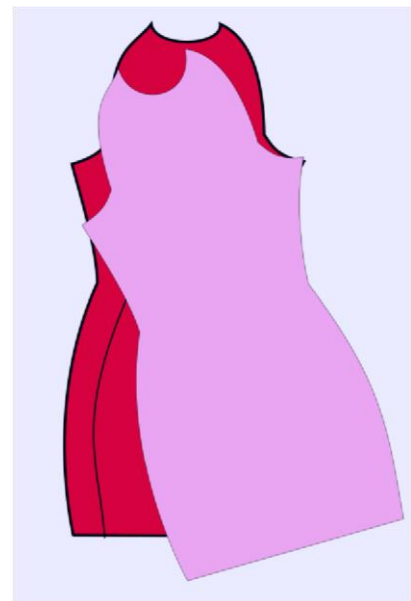
Repeat with the other side

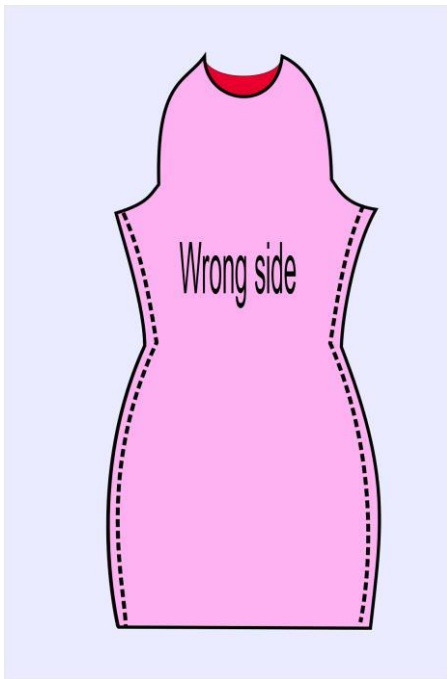
1. Place the front bodice and the front side panel together, right sides facing, and sew along



3. Place front and back dresses together and sew along the outside seam.

2. Repeat step 1 with the back bodice and the back side panels

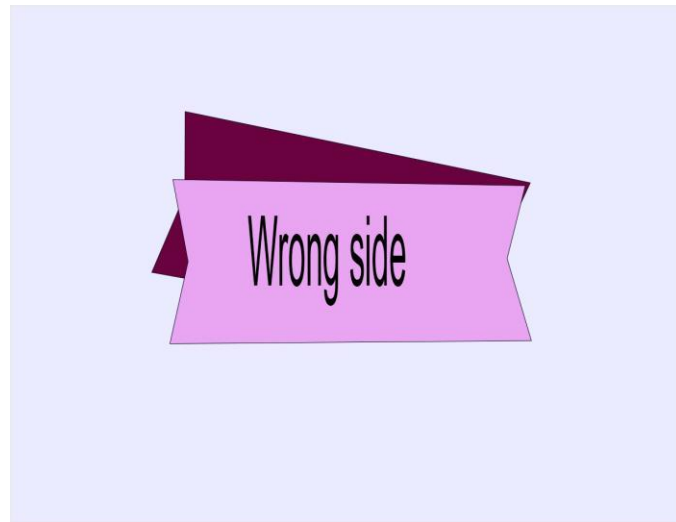




4. Hem Band:

Place the front and back hem band together, right sides facing.

7. Place the band at the bottom of the dress.

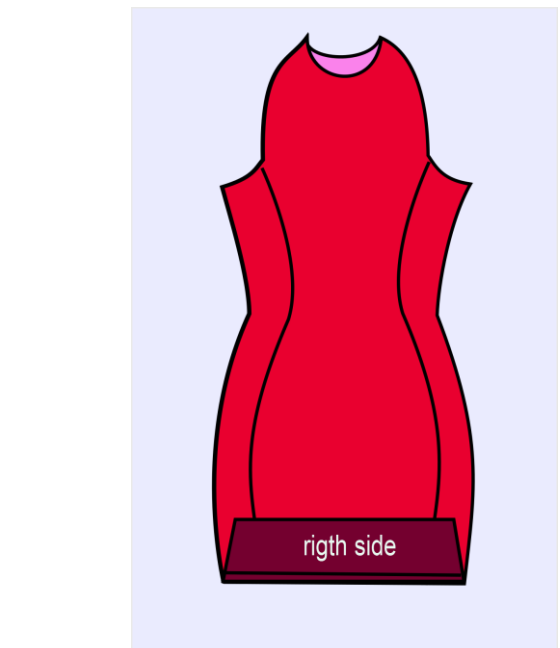


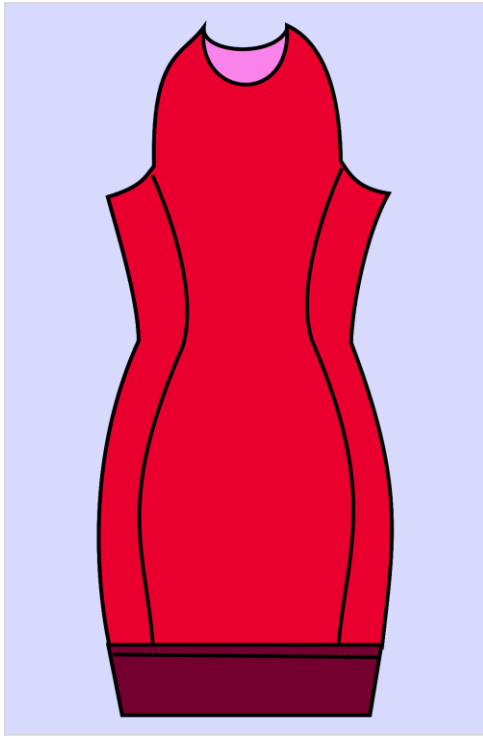
5. Sew along the sides

6. Then turn to the right side and sew along the top area.

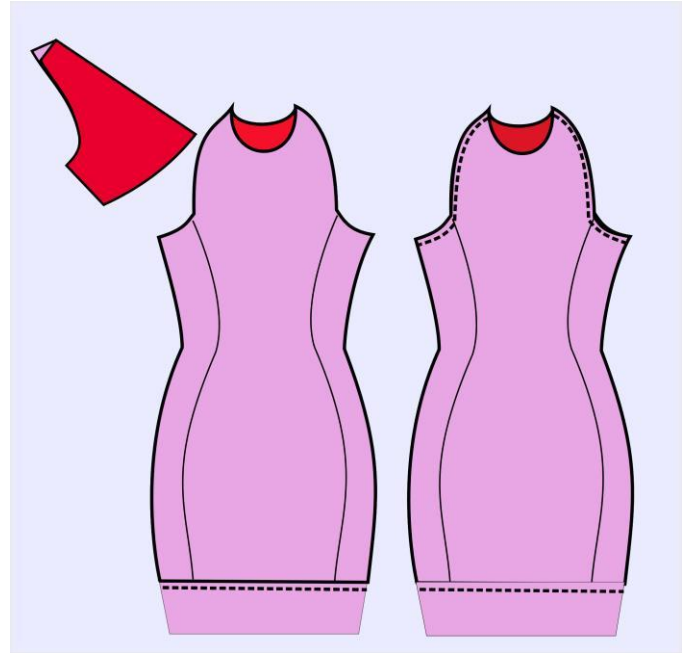
8. Turn around and topstitch the hem to the dress bodice.

Turn the dress to the wrong side to place the sleeves.





11. Insert the sleeves into the dress and sew along the armhole.



12. Neckband:

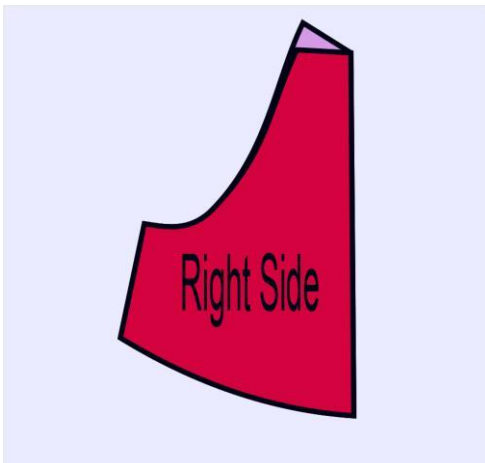
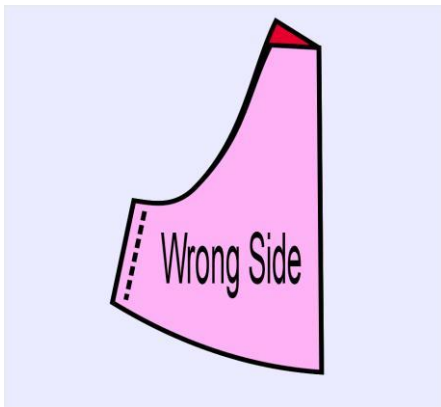
9. Fold the sleeves and sew along the inside seam.

Fold the neckband in two, right sides facing.

Sew along the seam.

Turn to the right side and fold it again in two, this time lengthwise.

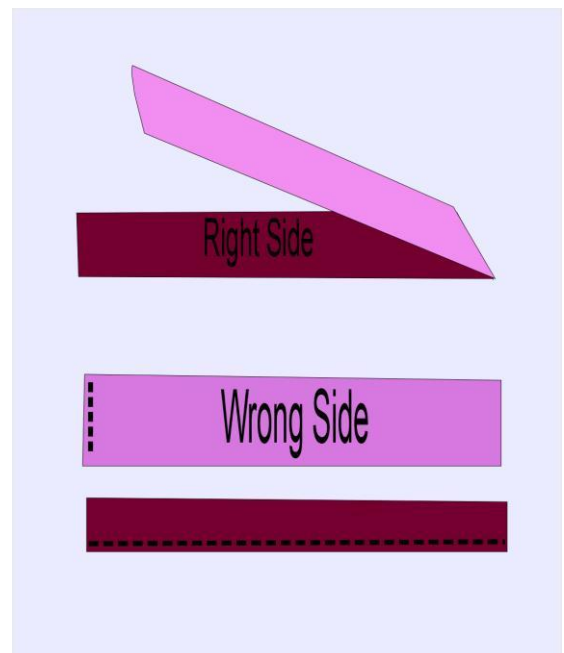
Sew along the outer border



10. Turn to the right side.

12. Place the neckband on the dress neckline, right

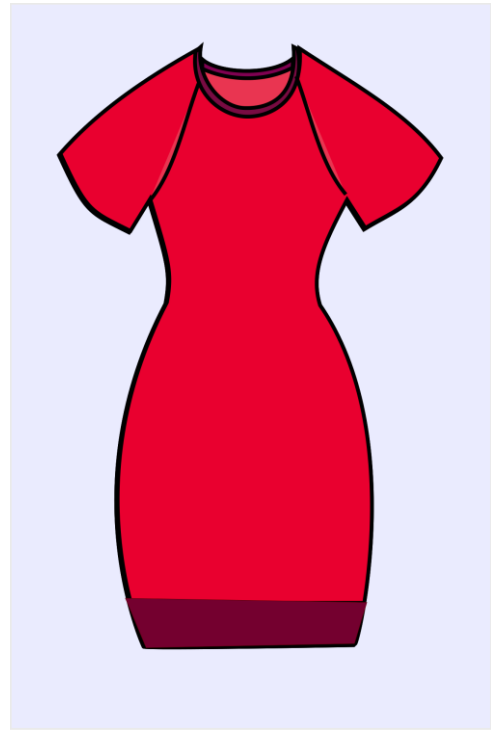
sides together and sew along.



The neckband should stretch by 20% of its capacity,

13. After placing the neckband, topstitch the area. to keep the neckline flat on the dress.

Do not stretch the dress when sewing along, it will make it wrinkly



Thanks for reading this tutorial.

Please, do not hesitate to contact me if you have any questions about this tutorial <http://www.onthecuttingfloor.com>