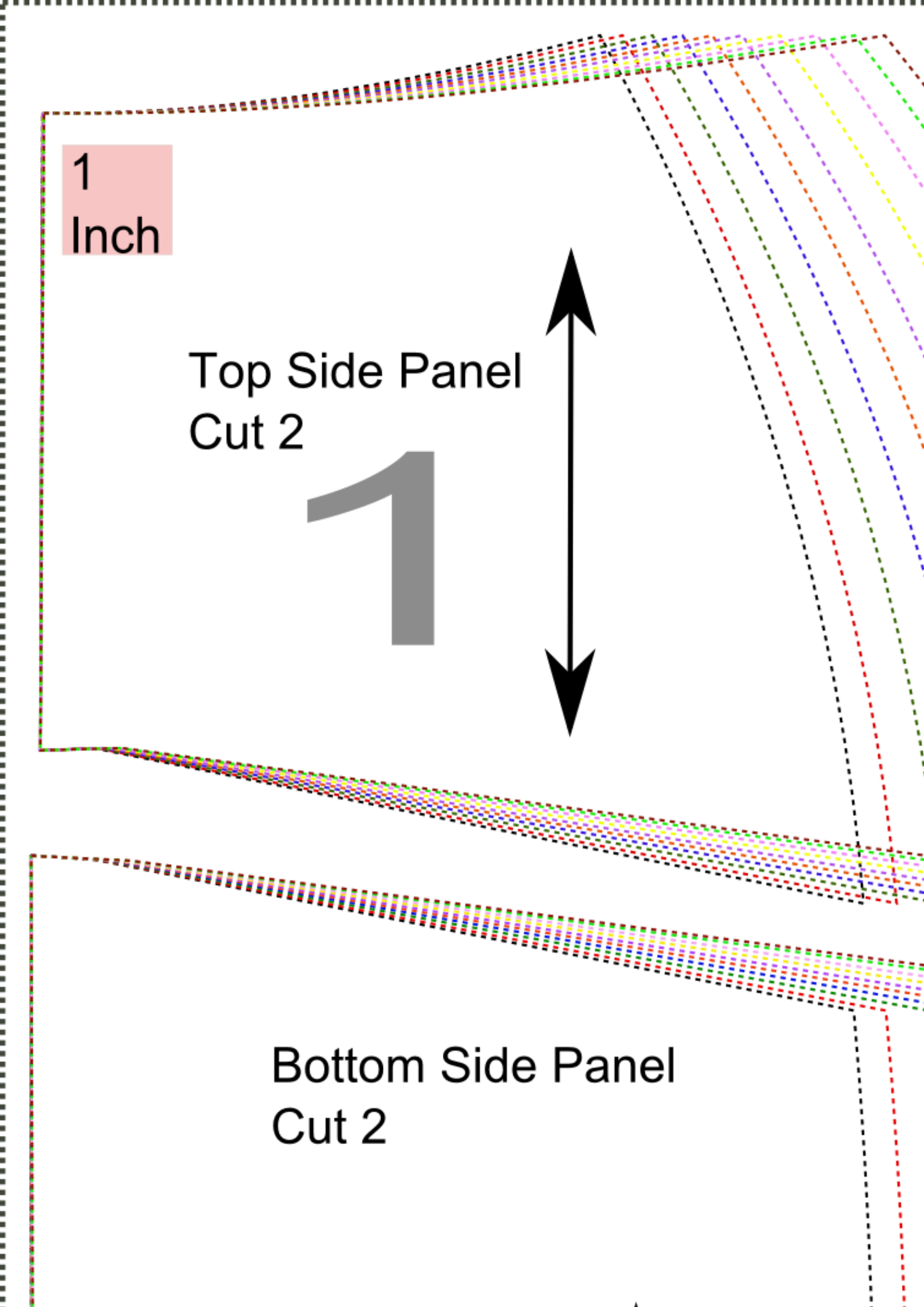


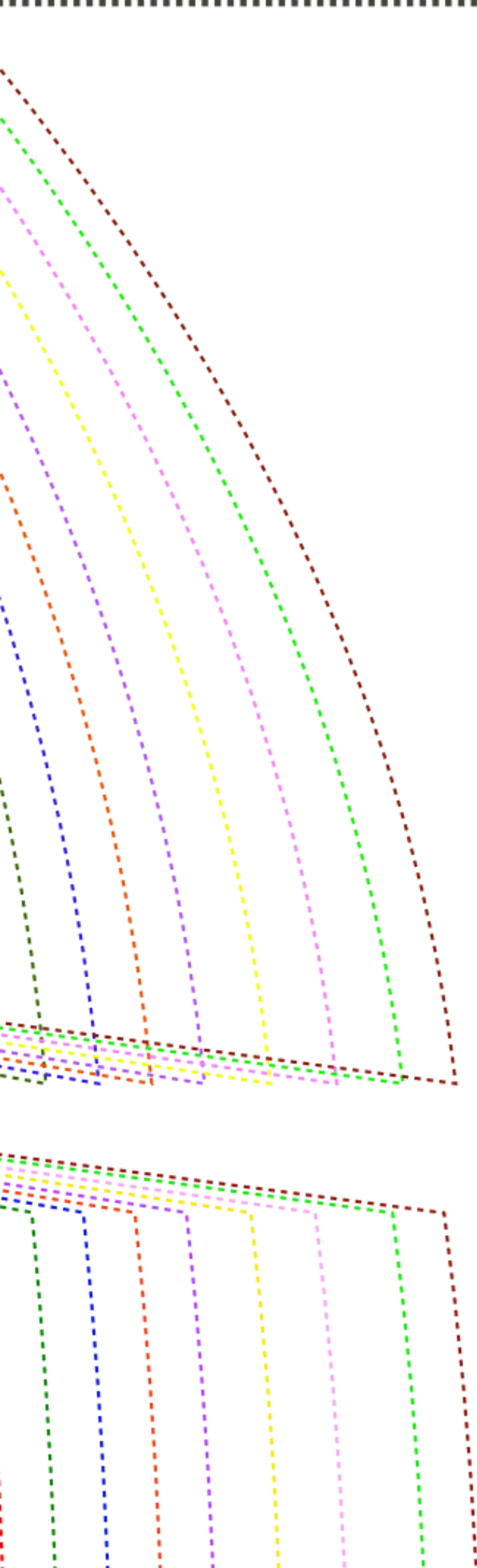
1
Inch

Top Side Panel
Cut 2



Bottom Side Panel
Cut 2





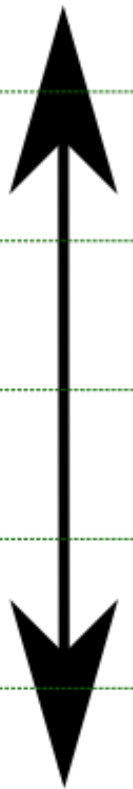
seam allowance

Pleat lines

2

Center Front
Panel

Cut 2

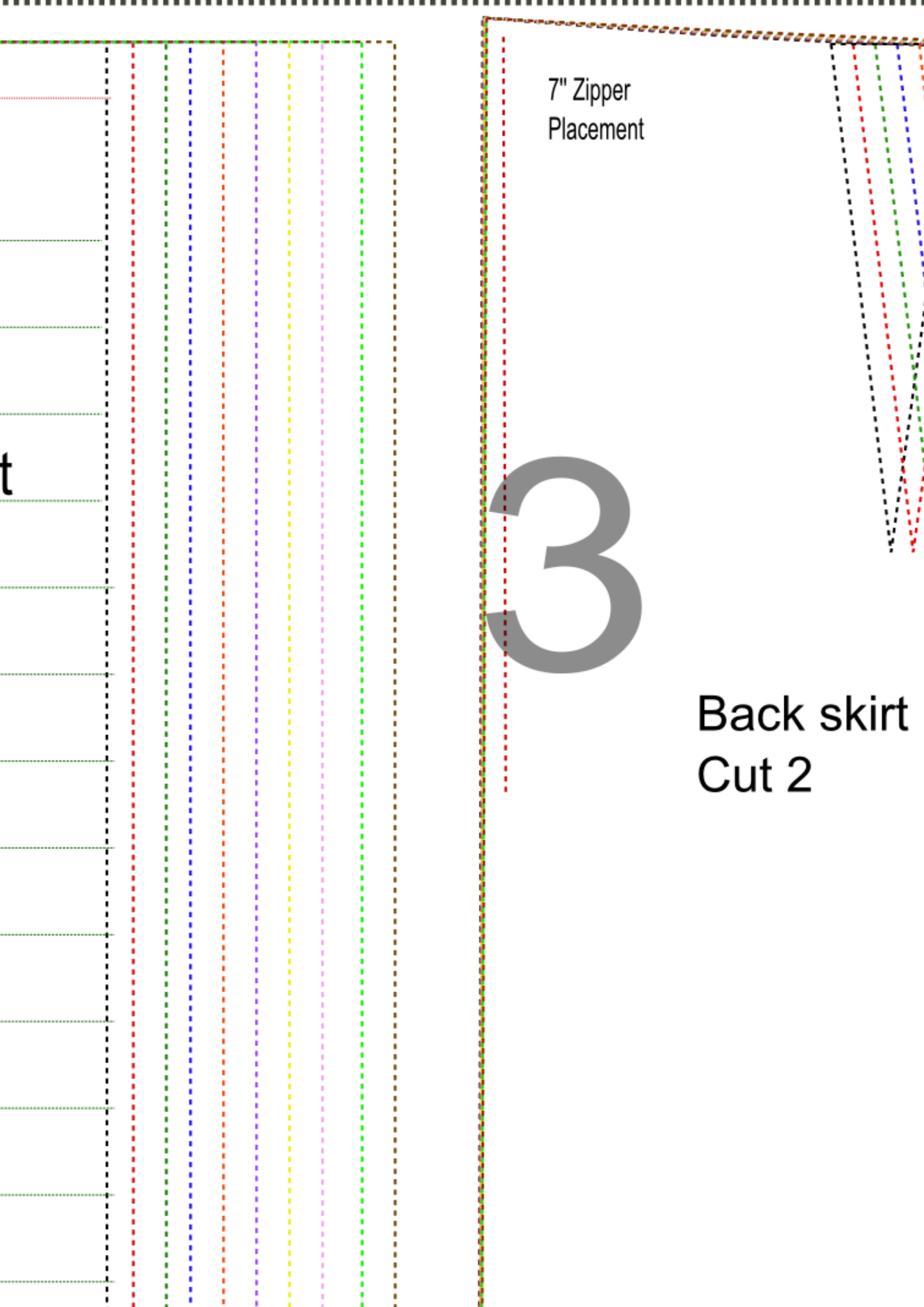


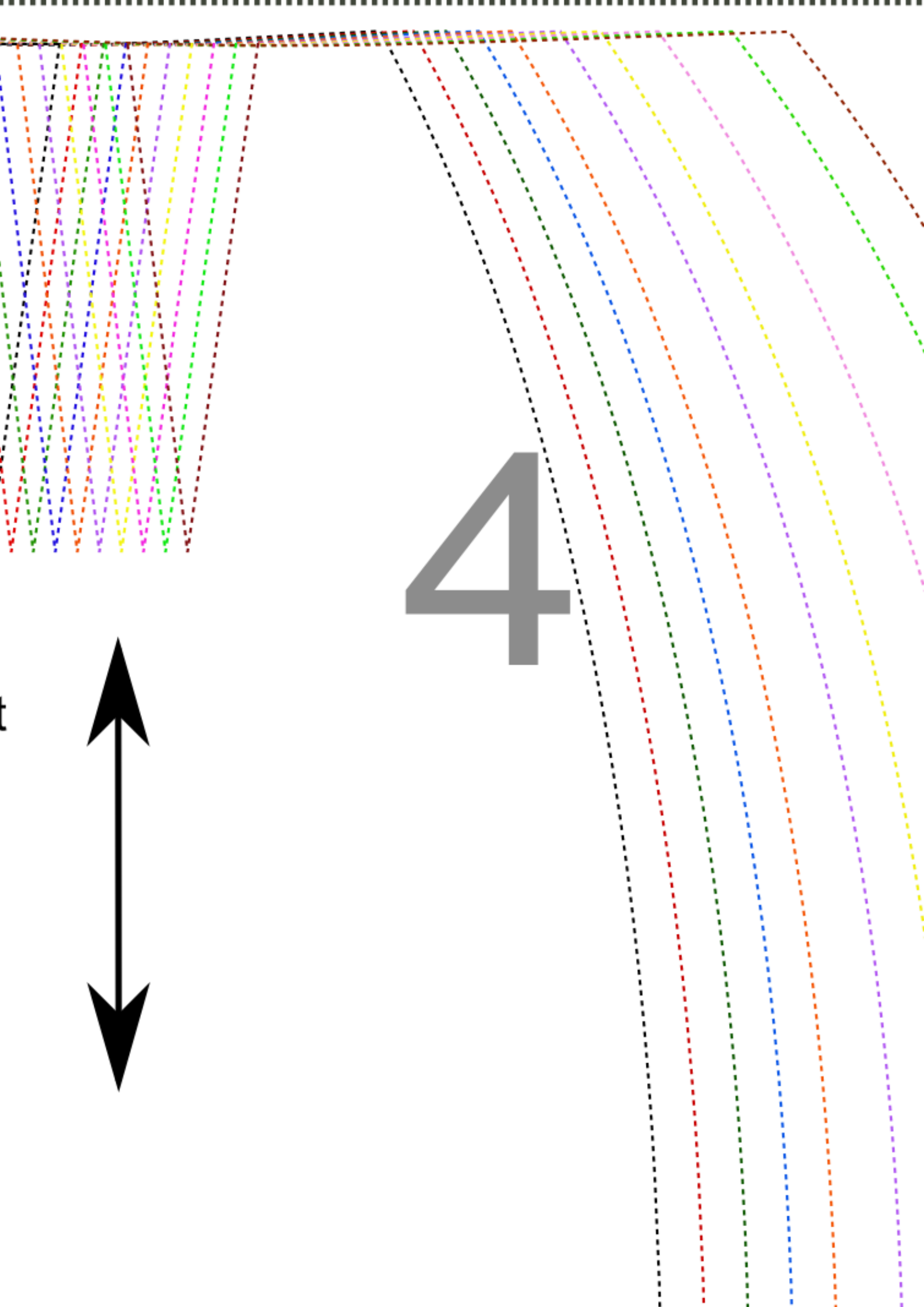
t

7" Zipper
Placement

3

Back skirt
Cut 2



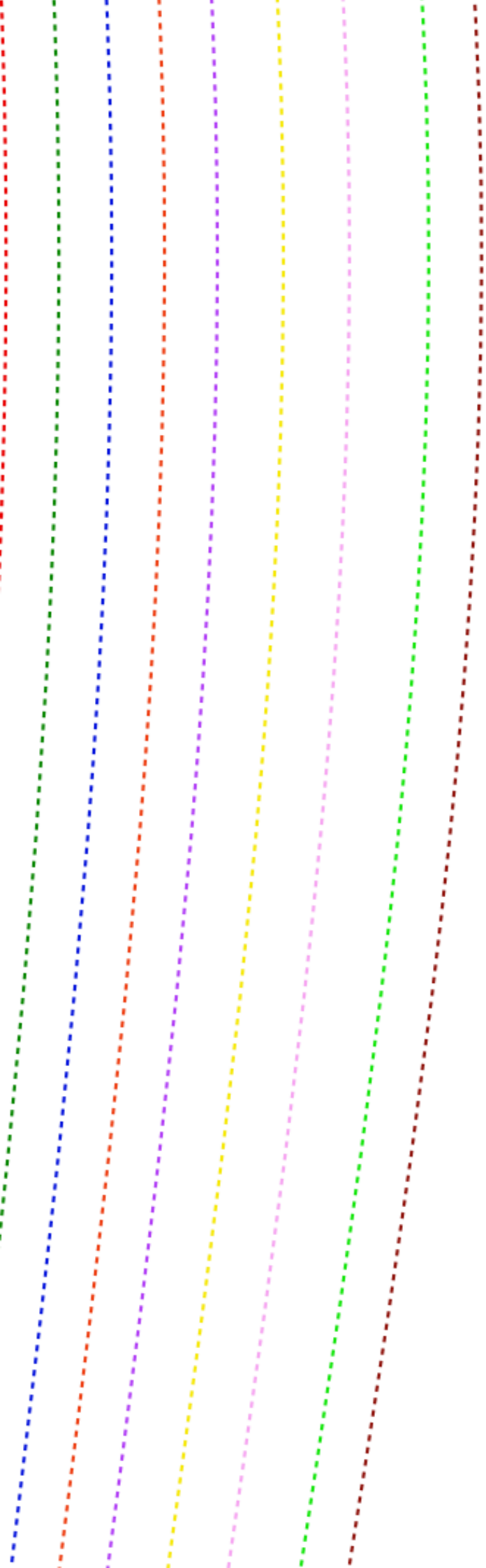


5

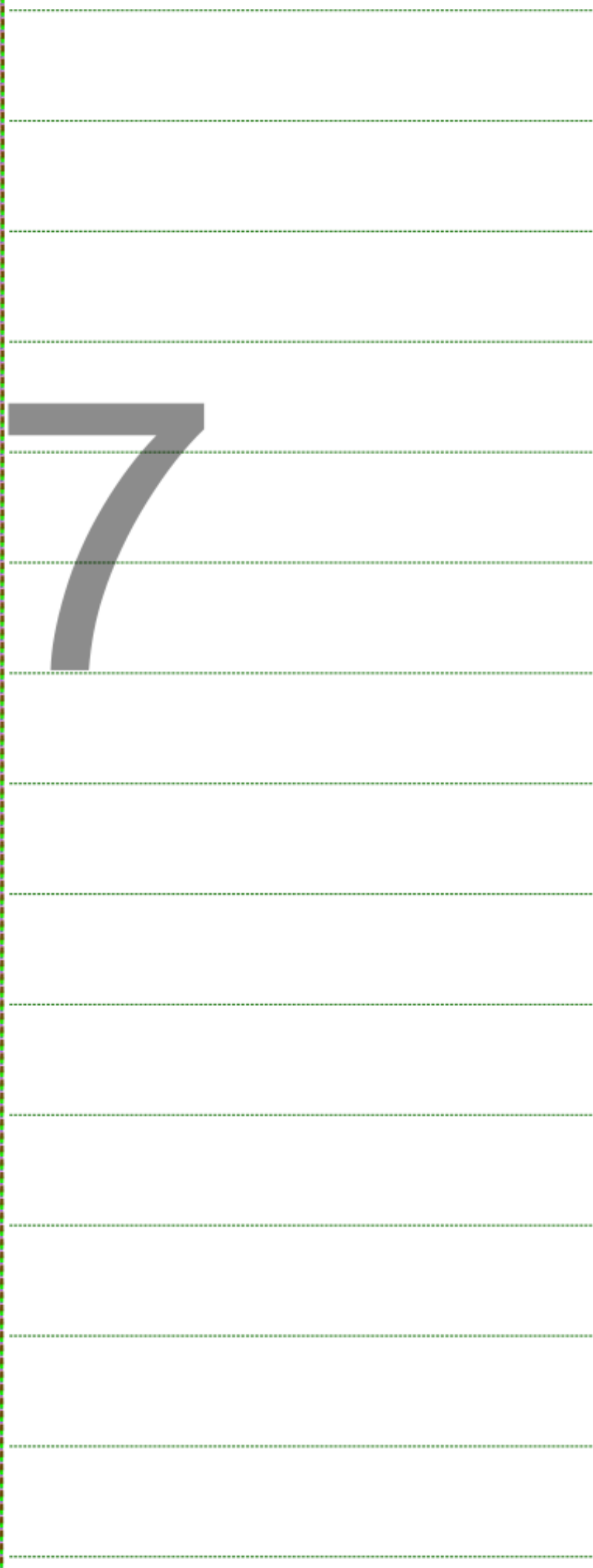
6



| SIZE | | | BUST | WAIST | HIPS |
|------|----|--------|------|-------|------|
| US | UK | EUROPE | | | |
| 4 | 8 | 34 | 31 | 25 | 35 |
| 6 | 10 | 36 | 33 | 26 | 36 |
| 8 | 12 | 38 | 34 | 27 | 38 |
| 10 | 14 | 40 | 36 | 29 | 40 |
| 12 | 16 | 42 | 37 | 30 | 42 |
| 14 | 18 | 44 | 39 | 32 | 44 |
| 16 | 20 | 46 | 41 | 33 | 46 |
| 18 | 22 | 48 | 43 | 35 | 48 |
| 20 | 24 | 50 | 45 | 38 | 50 |
| 22 | 26 | 52 | 48 | 40 | 52 |

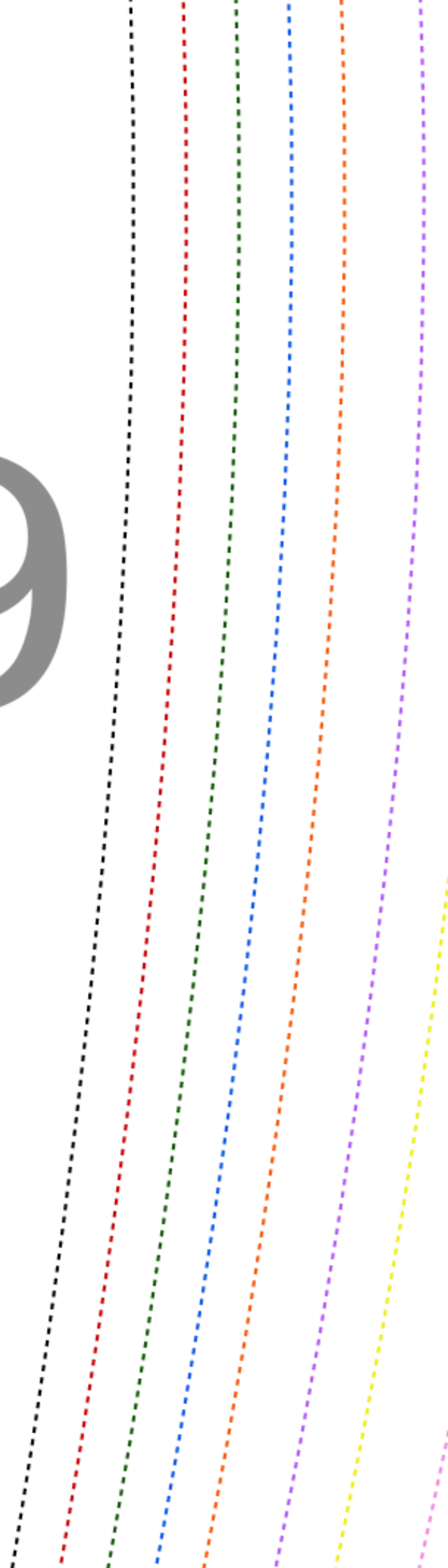


7



8

9



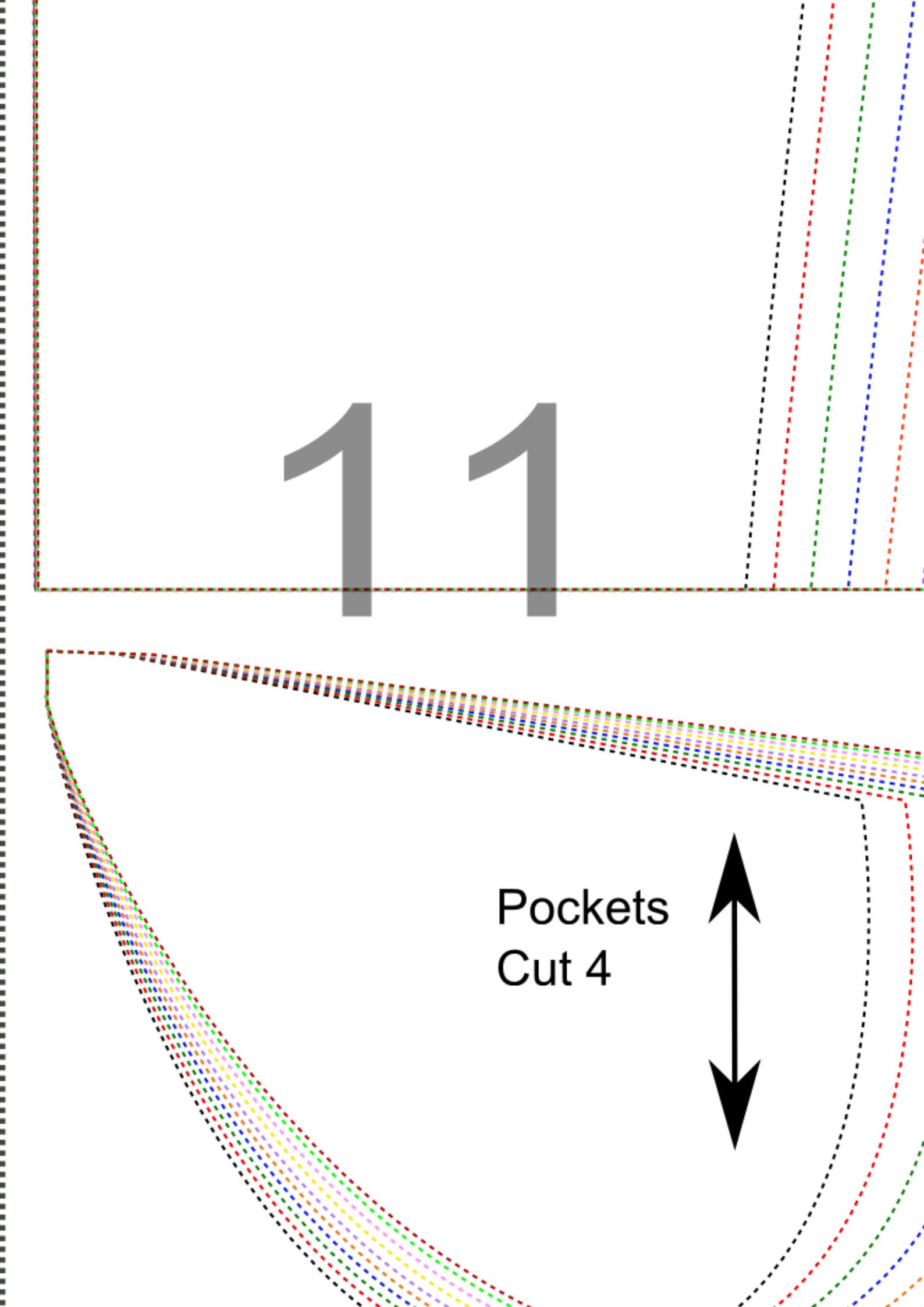


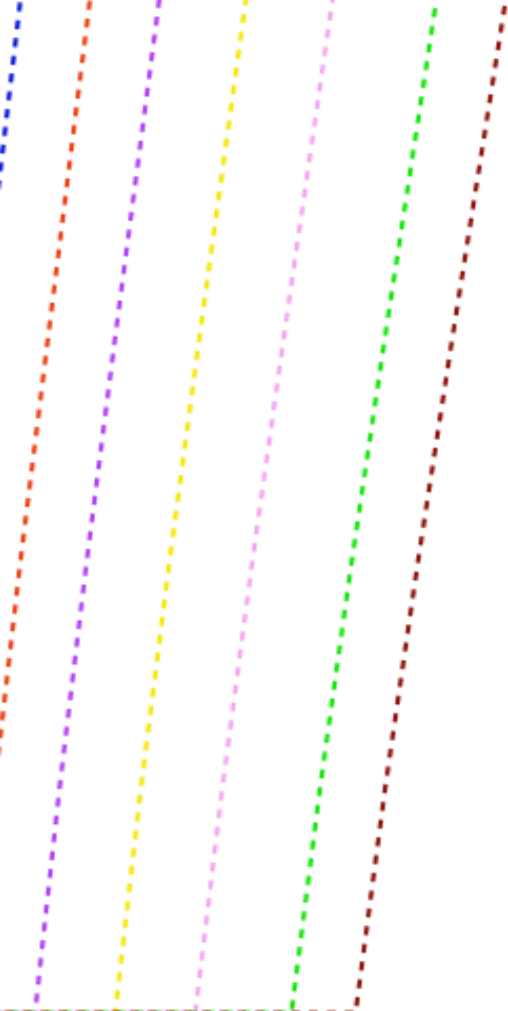
10



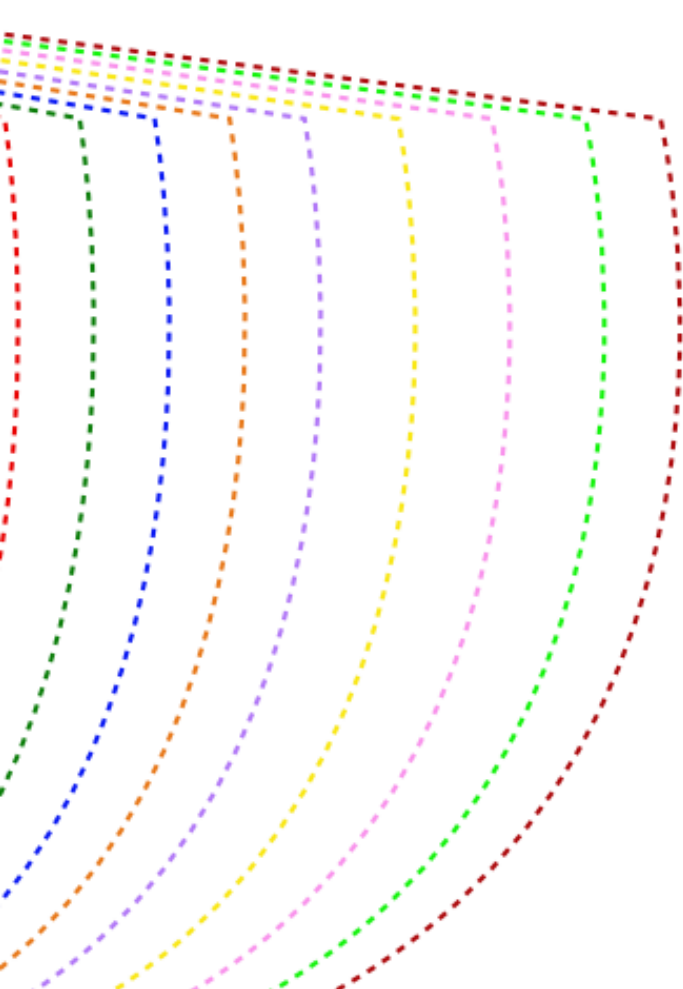
1 1

Pockets
Cut 4





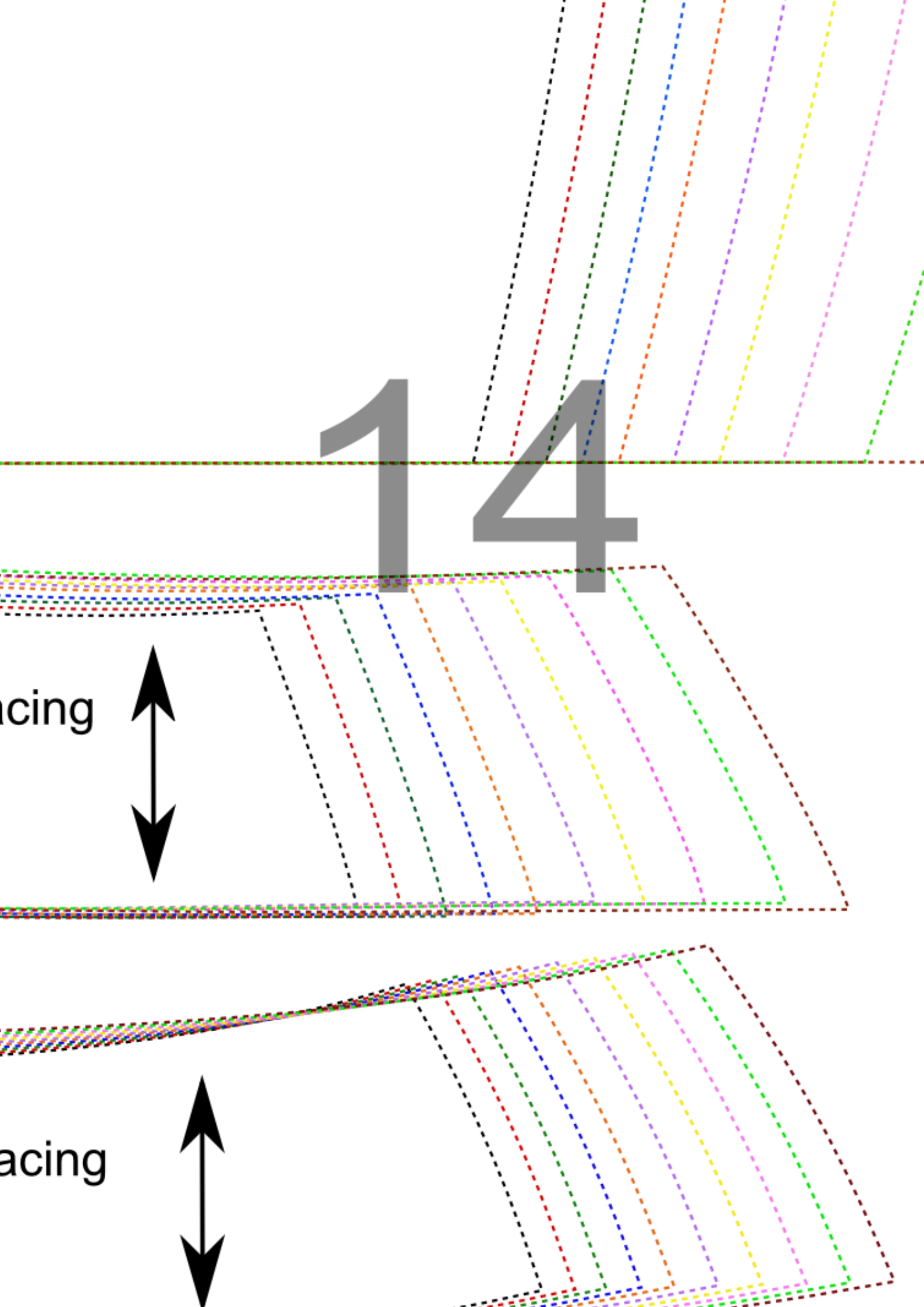
1 2



1 3

Back Face
Cut 2

Front Face
Cut 2





15





16

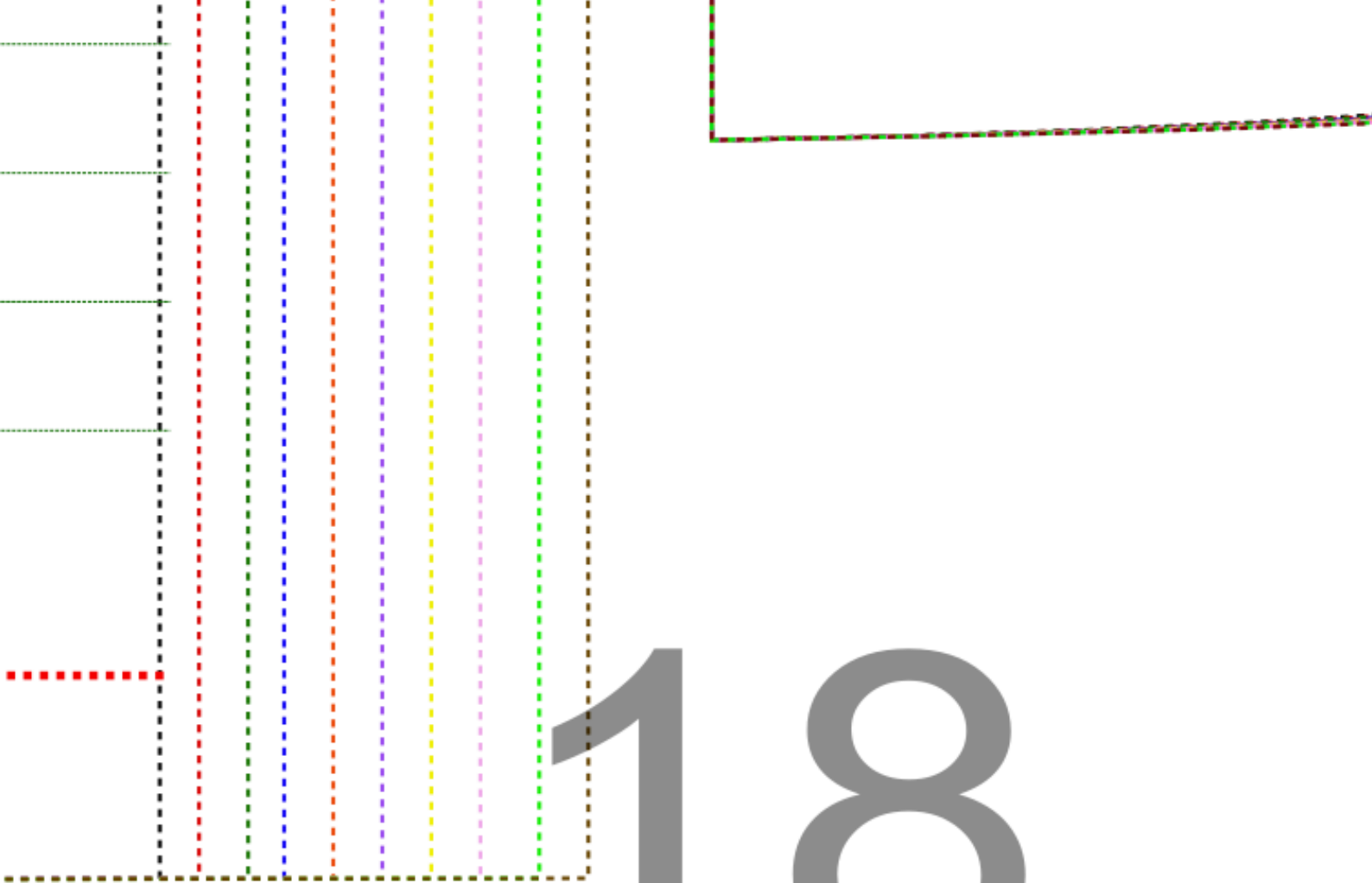




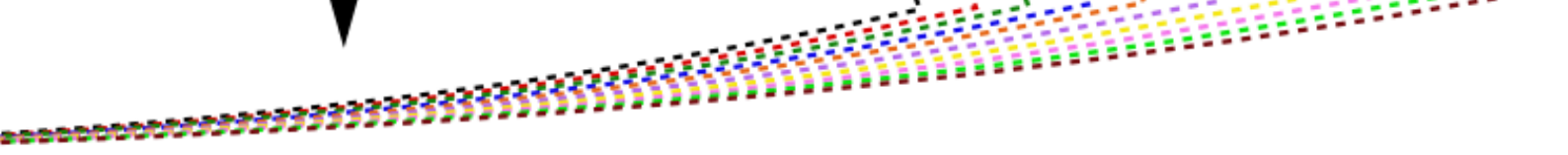
Handwriting practice lines consisting of a solid top line, a dashed midline, and a solid bottom line. The midline is red and labeled 'Hemline'.

17 Hemline





18



19



20